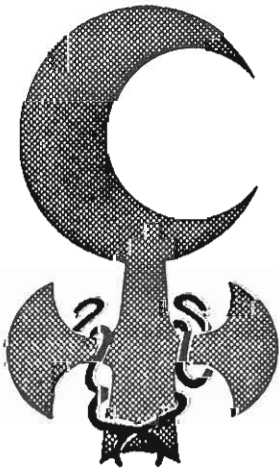


CASSANDRA

radical feminist nurses newsjournal

Vol. 3 No. 2 May 1985

3	CASSANDRA Gathering in Ann Arbor	21	More Reading From Emma
6	Business Agenda Background	24	Dear Cassie
7	Proposed By-laws	25	Coordinating Cronos
11	University of Michigan Area Map	25	Gender Neutral Insurance
13	West Quad Housing Information	26	Calls for Papers
14	Michigan Womyn's Music Festival	27	Announcements
15	From a Laborer's View	28	Web reports
16	Poetry	29	Contact Women
18	Menopause: An Update	30	Classified
20	Re-sources	31	Budget Report



We are all longing to go home to some place we have never been - a place, half-remembered, and half-envisioned we can only catch glimpses of from time to time. Community. Somewhere, there are people to whom we can speak with passion without having the words catch in our throats. Somewhere a circle of hands will open to receive us, eyes will light up as we enter, voices will celebrate with us whenever we come into our own power. Community means strength that joins our strength to do the work that needs to be done. Arms to hold us when we falter. A circle of healing. A circle of friends. Somewhere where we can be free.

- Starhawk

**CASSANDRA: RADICAL FEMINIST
NURSES NEWSJOURNAL**

A publication of Cassandra: Radical
Feminist Nurses Network
P.O. Box 341
Williamsville, NY 14221
©1985 All rights reserved

Published 3 times each year. Available to
websters, friends and institutions. Limited num-
bers of back issues are available for \$4.00/issue.
Use the above address for:

- change of address
- membership/subscription information
- permission to quote over 50 words
- ordering back issues

BACKGROUND AND PURPOSE

CASSANDRA: RADICAL FEMINIST NURSES NEWSJOURNAL
is published at the time of the full moon in September, January
and May. There are no editors or review board members; the
material for each issue is reviewed, selected, and the issue
prepared by a local Web which assumes responsibility for three
sequential issues. The name of the Web producing each issue
and the names of women who contribute to the production of
the issue are printed in the "Thrums" section.

The name CASSANDRA is a tribute to Florence Nightingale
who wrote an essay titled Cassandra two years before her ser-
vice in the Crimean War. In it she states: "Why have women
passion, intellect, moral activity - these three - and a place in
society where no one of the three can be exercised?" Like
the mythical Cassandra, Nightingale possessed the gift of
prophesy and despaired at not being heard. CASSANDRA:
RADICAL FEMINIST NURSES NEWSJOURNAL is dedicated to
re-creating the Cassandra myth by providing a place where the
passion, intellect and moral activity of women who are nurses
can be voiced and heard. The newsjournal is a means for
actively preserving and passing on written materials coming
from a woman-defined perspective. Our hearing one another is
critical to establishing a network among feminist nurses who
need to be heard in nursing practice, education, research,
administration and health care.

MAILING LIST

CASSANDRA's mailing list is confidential and will not be
sold or given to any other group. Names and addresses of
women who join CASSANDRA are provided to Contact Women
in their geographic area; only the names and addresses of
Contact Women and Coordinating Cronos (women responsible for
specific tasks) are published in the Newsjournal. The
Newsjournal is distributed to members and friends of
CASSANDRA, and to institutions or groups that subscribe to
the Newsjournal.

PHILOSOPHY

CASSANDRA: RADICAL FEMINIST NURSES NEWSJOURNAL
publishes original works coming from a feminist perspective and
encourages exploration of issues that radically affect nurses
and women. While opinions expressed are those of the authors
and not necessarily those of CASSANDRA as a whole, we do
accept responsibility for what we print. We will not inten-
tionally print material that is harmful to women because of
color, sexuality, religious or cultural background, physical dis-
ability or economic situation. We reserve the right to edit
material submitted, with the intent of remaining true to the
author's original material. Insofar as possible, edited material
will be made available to the author prior to publication.

ADVERTISING

Display ads will be published for businesses offering pro-
ducts that are consistent with CASSANDRA'S philosophy and
purposes. Write to CASSANDRA for rates. Judgments about
the suitability of ads for the Newsjournal will be made by the
Web responsible for producing the Newsjournal.

CONTRIBUTION GUIDELINES

We welcome the contribution of articles, information, and
letters that are of interest to women who are feminist nurses.
Our regular features include nursing history, feminist research,
myths influencing women's lives, reviews of books and journal
articles, resource information, and notes that promote net-
working.

Articles should be original work that has not been pre-
viously published; preference is given to articles written by
women who are members of CASSANDRA. The suggested
length of articles, commentaries and reviews is 2-4 pages,
typed double-spaced. Manuscripts of articles and book reviews
are reviewed and selected by members of the Web that produ-
ces the Newsjournal. Manuscripts are evaluated in relation to
consistency with CASSANDRA's purposes and philosophy, con-
ciseness, readability, and strength of presentation of ideas and
analyses of issues.

We welcome letters, notes and resource information from
anyone interested in sharing information with members of
CASSANDRA. Letters should be no longer than one page in
length, typed double-spaced. Notes and resource information
need to be very brief, approximately 12 double-spaced typed
lines.

All material must be accompanied by the author's name
and address in order to be published. We prefer to publish
names and addresses, but we will withhold your name and/or
address if requested.

Please mail your contribution so that it reaches us by the
following lifeline dates:

If you have something you wish to contribute, please mail
it so that it reaches us by the following dates:

January issue: November 15

May issue: March 15

September issue: July 15

Our mailing address is:

CASSANDRA
P.O. Box 341
Williamsville, NY 14221

OUR PURPOSES. . .

CASSANDRA: RADICAL FEMINIST NURSES NETWORK is a
gathering of women in nursing practice, education, research and
administration. Our primary commitment is to end the
oppression of women in all aspects of nursing and health care.
We believe that oppression of women is fundamental to all
oppressions and affects all women.

Our primary purposes are to:

- Develop and communicate radical feminist, woman-centered
analyses of issues in nursing and health care.
- Nurture local, regional, and national networks of women in
nursing who are committed to a radical-feminist perspective.
- Provide an environment for communication, support and safety
among nurses regardless of race, class, creed, ability, or sexual
preference.
- Share and pass on skills of leadership, analysis and com-
munication.
- Take strong public actions on nursing and health care issues.
- Preserve and publish past and present significant works of
nurses.
- Publish writings on women's health that are rooted in femi-
nist analysis.
- Support nursing research using a feminist approach.
- Develop feminist educational material for nursing programs.
- Establish a feminist nursing journal.

OH! NOOOOOOO!



We goofed on lay-out.

PAGE 7 is really on page 26 . . .

PAGE 26 is really on page 7 . . .

. . . When you read "Business Agenda Background" that begins on page 6, turn to page 26 to finish the article.

. . . If you want to read the "Proposed By-laws", turn to page 26 to begin. Then turn to page 8 to continue.

. . . "Call for Papers" begins on page 7, and continues on page 28.

We could promise it won't happen again, or tell you it was deliberately designed for your amusement, or plead fatigue and overwork, or even hope you wouldn't notice. But we won't. We regret the error and hope you enjoy reading despite the inconvenience.



CASSANDRA GATHERING IN ANN ARBOR, MICHIGAN

WHEN:

August 3-7, 1985.

WHERE:

The University of Michigan campus, the Wedge Room on the 2nd floor of the West Quadrangle. 313/764-5297.

COORDINATOR FOR THE GATHERING:

Jacquelyn Campbell, 1044 Western, Ann Arbor, MI 48103.

REGISTRATION

There are at least two forms that you will need to attend to if you plan to come to the gathering. If you plan to stay in the dormitory, you will need to return the summer housing registration form (enclosed with this Newsjournal) to the University of Michigan.

While there is no "pre-registration" required, it would greatly facilitate planning if you return the CASSANDRA GATHERING form included in this Newsjournal. Read on for more information about what to include on your form!

COST

You will need to take care of your own transportation cost to Ann Arbor, your own housing and food. Our meeting room will cost \$50.00 per day; as has been our "tradition", the CASSANDRA budget will cover a portion of this cost and a portion will be shared by those of us who gather. The amount of each woman's contribution will be determined by consensus at the gathering and according to each woman's ability.

If you want to plan on spending money, we will have CASSANDRA t-shirts available for

purchase when you arrive in Ann Arbor (exact price has not yet been determined but plan on \$8-10). CASSANDRA jewelry will also be available. We are working with an Ann Arbor women's bookstore to have books available for purchase during the gathering.

HOUSING

We have reserved residence hall rooms for 50 women in the West Quad (the same building as our meeting room) from August 3 through August 7. Rates per night are: Single - \$14.56; Double - \$21.11. Bath facilities are dormitory style - down the hall! Enclosed in this Newsjournal is a copy of the reservation form and additional information supplied to us by the University of Michigan. To make room reservations, return the completed form to the Housing Conference Services, Gwendolyn F. Killyon, University of Michigan, 541 Thompson St./112 West Quad, Ann Arbor, Michigan 48109-1360.

There are four hotels/motels in the area if you prefer this type of accomodation. They are:

Campus Inn, 615 E. Huron, Ann Arbor, MI 48104. 313/769-2200. Outdoor pool, walking distance, \$56 single, \$66 double.

Bell Tower Hotel, 300 S. Thayer, Ann Arbor, MI 48104. Walking distance. 313/769-3010. \$31-41 single, \$40-49 double.

Briarwood Hilton, 610 Hilton Blvd., Ann Arbor, MI 48104 (I-95 and State St.). 313/761-7800. Domed pool. \$55 single, \$65 double.

Arbor Lodge, 3245 Washtenaw, Ann Arbor, MI 48104. 313/971-3000. \$23.95 single, \$30.95 double.

Two camping areas are also available:
KOA Campground, I-94 Exit 187,
Rawsonville Rd. For details and information
call 313/482-7722.

Waterloo Recreation Area has two modern
and two rustic sites. For information call
313/475-8307.

FOOD

Unfortunately, we will not have cooking
facilities in the building where we will be
meeting. There is a cafeteria in the building,
and several excellent restaurants within easy
walking distance. Several restaurants in the
area specialize in vegetarian menus. There are
parks in the area; we will plan for our own
picnics as we feel inspired when we gather.

CHEMICAL FREE SPACE

We are concerned about the role of alco-
hol, tobacco and other substances in per-
petuating women's oppression and compromising
our health. Alcohol will not be served during
any of the CASSANDRA business times; if
alcohol is served during a Spinning Bee it will
be by group consensus and a non-alcoholic
beverage will also be available. Smoking
breaks will be planned for all gatherings so
that women who smoke can do so in a space
apart from the gathering space, yet not be
excluded from the discussion/interaction.

PARKING

There is parking in a closed structure 1½
blocks from the West Quadrangle. There is
also an open lot across the street from West
Quad; the charge is \$3.50/day and you need to
request a permit when you register for your
room.

CHILD CARE

There are two child care facilities in the
area that can accomodate children on a per
day basis. Write or call for more information
and for reservations.

Clonlara Child Care, 1289 Jewett, Ann
Arbor, 48104. Children ages 2½ to 5 years.
Open from 7:30 a.m. to 6 p.m. 313/769-4511.

YWCA of Ann Arbor, 350 S. 5th Ave.,
Ann Arbor, 48104. Older children.
313/663-0536.

TRANSPORTATION

Several women from the Detroit area, and
others from cities of driving distance will be
gathering on Friday to be available to assist

with ground transportation for women who
arrive by plane, train or bus. If you are
planning to travel by plane you will fly in to
the Greater Detroit Area airport. If you are
planning to travel by bus or train, arrange to
arrive in Ann Arbor, rather than Detroit. The
airport, Amtrak station and bus station are
readily accessible to the campus. If you want
to connect for transportation from the airport,
bus or train station, indicate your planned
arrival time on the CASSANDRA GATHERING
form to be returned to Jackie, and we will
arrange for someone to meet you. We will
plan to connect in the baggage claim area
designated for your arrival. We may be coor-
dinating transportation for several folks; if
we aren't there when you arrive and you have
let us know to expect you, hang loose a few
minutes and we will be along - donned in
CASSANDRA t-shirts or carrying some form of
identification!

We are not attempting to coordinate
transportation to the Michigan Women's Music
Festival in advance. Hart, where the Festival
is held, is about 5 to 6 hours driving time
from Ann Arbor. We will network at our
gathering to assist all women who need or
want transportation to the Festival. General
information about the Festival is included in
this newsjournal.

AGENDA

Anne Montes in Buffalo is the coordinator
for the agenda, and has been busy discussing
ideas with everyone who will talk about it!
Anne has also reviewed the 11 forms that
women returned indicating their plans to come
to the gathering and appreciated the ideas that
women contributed in this way. The women
who participated in the various discussions
decided to focus on what we can each contri-
bute, rather than what women want to receive
or have provided for them. Therefore, the
focus for building the agenda has been on
ideas that women have indicated they want to
bring in relation to ideas, skills, sharing,
discussion.

The plan is to begin promptly at 3:00 p.m.
on Saturday afternoon, August 3; this provides
time for women to visit if you arrive early in
the day, or time for women to drive or fly in
earlier in the day. We will end promptly at
noon on Wednesday, August 4.

The process that we will use for this
gathering is the same that we used in San
Francisco and in New Orleans. The process is

now published in PEACE AND POWER: A HANDBOOK OF FEMINIST PROCESS (\$4.95). If you want to order a copy before the gathering, write in the title on the EMMA book order form included in this newsjournal. If you are not familiar with the process, this book will provide some background. Charlene and Peggy will also convene a spinning bee on Feminist Process on Sunday evening, and again during the week if desired.

We have divided each day into sections that include work, nurturance and play activities. We have designated specific times for accomplishing the tasks that CASSANDRA needs to address during this gathering. We use the term "spinning bees" to denote those times when we can gather as a large group, or in small groups, to focus on specific interests and discussions that may or may not be directly related to CASSANDRA's tasks; these are times for nurturing. Several possibilities exist; several women have already volunteered to convene spinning bees on topics of interest; these are listed on the agenda below. If you are interested in convening a spinning bee, let us know on the CASSANDRA GATHERING form. If a thought or an idea occurs to you after you have sent your form in or on the trip in, there will be ample opportunity to spontaneously integrate your idea on the agenda when we all get together.

The following is a tentative agenda; this will be altered as needed when we get together.

IF YOU ARE NOT ABLE TO GATHER
WITH US IN AUGUST . . .
WE WANT TO HEAR FROM YOU

Please send your ideas, suggestions, comments, information in advance so that we can integrate your contribution during the gathering. Please write by July 25 to CASSANDRA, P.O. Box 341, Williamsville, NY 14221.

Saturday, August 3

- 3-5 p.m.: Get acquainted, orientation, CASSANDRA Herstory.
- 7-10 p.m.: Spinning Bees
 - Feminist Process
 - Women's Music - listen, visit and discuss; bring tapes, voices!
 - Meditation (depending on convener)
 - Others you bring!!!

Sunday, August 4

- 7 a.m.: Run, Meditations (depending!)
- 9-12 a.m.: CASSANDRA business
 - Principles of Unity
- 2-5 p.m.: CASSANDRA business
 - Clarification of process
 - Principles of Unity
 - Criticism/Self-criticism
- 7-10 p.m.: Spinning Bees
 - Book discussion groups (conveners needed)
 - Battering
 - Slide presentation: The Selling of Misogyny
 - Others you bring

Monday, August 5

- 7 a.m.: Run, Meditations
- 9-12 a.m.: CASSANDRA business
 - Principles of Unity
- 2-5 p.m.: CASSANDRA business
 - Bylaws
 - Cassandra Action Network and Newsjournal
 - Criticism/Self-criticism
- 7-10 p.m.: Spinning Bees
 - Feminist Research
 - Others you bring

Tuesday, August 6

- 7 a.m.: Run, Meditations
- 9-12 a.m.: CASSANDRA business
 - Budget
- 3-5 p.m.: CASSANDRA business
 - 1986 gathering
 - Criticism/Self-criticism
- 7-10 p.m.: Spinning Bees
 - Slide presentation: Peace Ribbon
 - Others you bring

Wednesday, August 7

- 7 a.m.: Run, Meditations
- 9-11 a.m.: CASSANDRA business
 - Thrums
 - Criticism/Self-criticism of whole gathering
- 11-12 a.m.: Closing ritual

BUSINESS AGENDA BACKGROUND

Whether you plan to attend the gathering, or to be there in spirit, here is a summary of the background for the business topics that are presently on the agenda. If you plan to be there in spirit, please send your comments and ideas about these issues to us so that your ideas can be considered in the discussion. Other items for discussion can and will be added when we gather.

Principles of Unity has been tentatively scheduled for a good proportion of the time, because this discussion will provide a basis for several of the decisions we need to make. We use the format for principles of unity as described in Peace and Power: A Handbook of Feminist Process. Principles of unity derive from the group's collective responses to the following questions:

- Who are we?
- What are our purposes?
- What issues are central to our purposes?
- What do we expect of every individual?
- What personal values are critical to creating a safe space within our group?

CASSANDRA has already determined who we are and what our purposes are. For those of us who have assumed responsibility for tasks, given our limited resources and our lofty purposes, some discussion is needed to determine which of our purposes are of greatest priority at this time to guide decisions about how to use our resources. In addition, we have not reached consensus regarding how we envision working toward these purposes. For example, one of our stated purposes is to nurture local, regional and national networks of women in nursing who are committed to a radical-feminist perspective. What do we want "nurture" to mean in action - having regular gathering? - focusing on communication among ourselves or the nursing community at large? - generating financial resources? How do we do these things for ourselves now, and what do we need to do to plan for the future?

The third component is one we have not yet clearly addressed, that is the identification of issues that are central in relation to our purposes. While we have identified issues that are central to our purposes in a general sense, these are primarily implied in our statement of purposes (see the inside front page of the Newsjournal). We may or may not wish to formulate a position on specific issues at this time, but we may want to consider identifying which issues are primary for us now in order

to focus our energy and resources. For example, racism, classism and heterosexism are implied issues in our purpose statement (there are others as well). If we select any one or two of these issues as primary at this time, what we do and how we do it will be directed by this choice. We are also asked frequently if CASSANDRA has a position on issues like reproductive rights or comparable worth. We may not find it desirable to take a specific "group" position on the issues per se, but explore ways in which our principles of unity influence how we do respond, either as individuals or as a group (e.g. our purposes now imply that our group response might be in the form of generating informational or educational materials related to specific issues - clarity on this would influence the content of the Newsjournal).

Another component of principles of unity is "what do we expect of every member?" So far, we have the explicit expectation that every member make an annual financial contribution to CASSANDRA; an implied expectation is that we are all equally responsible in decision-making. Our purposes include creating an environment of communication, support and safety among nurses, which implies a great deal about the behaviors we expect from one another. What these commitments mean to each of us deserve some discussion.

Finally, principles of unity include an identification of personal values that are critical to creating a safe space within our group. We have previously addressed the need to consider varying physical abilities within our group; we do not really know if our response has been sufficient for all women who are part of CASSANDRA. We have also addressed personal values related to sexuality both in New Orleans and in San Francisco, and explored the meaning of behaviors that facilitate or interfere with safety for women of differing sexual preferences - this may be a continuing dialogue as each gathering emerges. We have also been challenged regarding the dangers of elitism - and the issue of creating a safe space for students, working nurses and non-academic women when many of our gatherings are focused on academic-type issues, those present include "academic" women, and our language and content of our discussions reflect a strong academic influence. These issues deserve discussion, with all voices heard and valued. There may be other personal values that we need to address.

CALLS FOR PAPERS

Call For Manuscripts: The editors of SAGE: A Scholarly Journal on Black Women are soliciting manuscripts for the Fall 1985 issue on Black Women's Health (Lifeline: August 15, 1985)

Suggested areas:

- articles on the status of Black women's health
- analyses of Black women's experience with health care delivery systems
- interviews with Black women health activists
- articles on the impact of new health technologies on Black women's health
- personal analyses of Black women's experiences with illness
- articles on Black women as health care-providers
- articles on Black women and alternative healing systems

Articles, critical essays, and in-depth interviews should not exceed fifteen typed, double-spaced pages. Reviews, research reports, resource listings, and documents should not exceed eight typed, double-spaced pages. All manuscripts must be sent in triplicate to the Editor. They should be typewritten, double-spaced with one inch margins at the top, bottom, and sides. Each manuscript must have a title page, which includes the author's name, an address (with phone number), and a one to three sentence bio-sketch. The author's name should not appear elsewhere on the manuscript. Footnotes, where used, must be indicated in the text and at the end of the article by superscript numerals. Full bibliographic information must be provided for all references. Contributors should consult the MLA style manual and back issues of the journal for details and examples of the format.

A stamped, self-addressed envelope and post card must accompany each submission to cover the cost of correspondence regarding the status of the manuscript. No manuscript will be returned unless a written request is made and adequate postage provided. All contributors whose manuscripts are published will receive two copies of the journal. All inquiries and manuscripts should be sent to the Editor at: SAGE: A Scholarly Journal on Black Women, P.O. BOX 42741, Atlanta, GA 30311-0741

The Division of Nursing, University of Massachusetts/Amherst, in cooperation with the Division of Continuing Education is planning

the First Annual Nursing Conference on Violence Against Women, to be held in November 1985. The purpose of the conference is to foster the dissemination of ideas, knowledge, research and clinical strategies in the areas of violence against women. A primary goal of the conference is to provide a forum for nurses and other health care providers involved in the area of woman abuse to meet, share knowledge, and gain support for our work.

Proposals are solicited for presentation. Suggested topics areas include but are not limited to: Rape, Marital Rape, Battering, Sexual Abuse, Incest, Medical Abuse, Media Abuse, Exploitation of Female Health-Care Providers, Prevention, Education Approaches. Lifeline for proposals is June 1, 1985. The program committee will select presentations by June 15, 1985. Contact: Peggy Perri, Division of Human Services, School of Education, Hills South, University of Massachusetts, Amherst, MA 01003 (phone 413/545-2843) or Christine King, Division of Nursing, Arnold House University of Massachusetts, Amherst, MA 01003 (phone 413/545-1341)

INCEST SURVIVORS: contributions of all sorts wanted for a book about confrontations between women incest survivors and the perpetrators or significant others. We are two lesbian feminist incest survivors who want to help break the isolation surrounding incest and provide an empowering record of our experience in healing and confrontation. We want to encourage all survivors, especially any women who have never been published before to share their experience. Copies of photos, personal recollections, letters with or without responses. Anonymity respected. Send contributions and S.A.S.E. to Lisa-Lyn Sharpe and Anonymous, 115 Pacific Ave., Pacifica, CA 94044 by October 1, 1985.

The Lesbian Task Force of the National Coalition Against Domestic Violence is calling for papers on Lesbian Battering. Papers should be typed, double-spaced and no longer than ten pages. Please send to Kerry Lobel, Arkansas Women's Project, 1601 Dennison, Little Rock, AR 72202. First priority: Battered lesbians telling their own stories; personal experiences, narratives, poetry, fiction, artwork. Second priority: Discussion papers on dynamics of violence in lesbian relationships; services for

ARTICLE 2.
PURPOSES

SECTION 1. OBJECTIVES AND PURPOSES

The primary objectives and purposes of this corporation shall be:

- Develop and communicate radical feminist, woman-centered analyses of issues in nursing and health care
- Nurture local, regional, and national networks of women in nursing who are committed to a radical feminist perspective
- Provide an environment for communication, support and safety among nurses regardless of race, class, creed, ability, or sexual preference
- Share skills of leadership, analysis and communication
- Take public actions on nursing and health care issues
- Preserve and publish past and present works of nurses
- Publish writing on women's health that are rooted in feminist analysis
- Support nursing research using a feminist approach
- Develop feminist educational material for nursing programs
- Establish and maintain a feminist nursing journal

ARTICLE 3.
MEMBERS

SECTION 1. DETERMINATION OF MEMBERS

"Members" of this corporation shall herein be referred to as Websters. Any female nurse who has paid her annual contribution is a Webster, a trustee of this corporation, a member of the Board of Trustees.

SECTION 2. ASSOCIATION OF WEBSTERS

Websters may convene in smaller geographically related areas and conduct business in accordance with these Bylaws. These smaller groups are herein referred to as "Webs."

SECTION 3. POWERS

Subject to the provisions of the California Nonprofit Public Corporation Law and any limitations in the Articles on Incorporation and Bylaws, the activities and affairs of this corporation shall be conducted and all corporate powers shall be exercised by or under the direction of the Board of Trustees.

SECTION 4. DUTIES

It shall be the duty of the Trustees to:

- Perform any and all duties imposed on them collectively or individually by law, by the Articles of Incorporation of this corporation, or by these Bylaws
- Appoint and remove, employ and discharge, and, except as otherwise provided in these Bylaws, prescribe the duties and fix the compensation, if any, of all coordinators, agents and employees of the corporation
- Meet at such times and places as required by these Bylaws
- Register their addresses with the Archivist of the corporation, and notices of meetings mailed or telecommunicated to them at such addresses shall be valid notices.

SECTION 5. COMPENSATION

Trustees shall serve without compensation except that they shall be allowed reasonable advancement or reimbursement for expenses incurred in the performance of their regular duties as specified in Section 3 of this Article.

ARTICLE 4.
GATHERINGS

SECTION 1. REGULAR AND ANNUAL MEETINGS

Meetings shall herein be designated "gatherings." Regular gatherings of Trustees shall be held at least annually at a time and date to be fixed by the Trustees from year to year.

SECTION 2. QUORUM FOR GATHERINGS

A quorum shall be determined by the Websters present at the local, regional or continental gatherings.

SECTION 3. CONDUCT OF GATHERINGS

Local, regional, continental gatherings shall be convened by a member of the Board of Trustees as designated prior to the gathering. The Archivist of the corporation shall keep a record of all local, regional and continental gatherings of the Board, and in her absence, she or another trustee shall appoint another person to act as the recorder of the gatherings.

ARTICLE 5.
LIABILITY OF TRUSTEES

SECTION 1. NON-LIABILITY OF TRUSTEES

The Trustees shall not be personally liable for the debts, liabilities, or other obligations of the corporation.

SECTION 2. INDEMNIFICATION BY CORPORATION OF TRUSTEES, COORDINATORS, EMPLOYEES OR OTHER AGENTS

To the extent that a person, who is, or was, a trustee, coordinator, employee or other agent of this corporation has been successful on the merits in defense of any civil, criminal, administrative or investigative proceeding brought to procure a judgement against such person by reason of the fact that she is, or was, an agent of the corporation, or has been successful in defense of any claim, issue or matter, therein, such person shall be indemnified against expenses actually and reasonably incurred by the person in connection with such proceeding.

If such person either settles any such claim or sustains a judgement against her, the indemnification against expenses, judgements, fines, settlements and other amounts reasonably incurred in connection with such proceedings shall be provided by this corporation but only to the extent allowed by, and in accordance with the requirements of, Section 5238 of the California Nonprofit Public Benefit Corporation Law.

SECTION 3. INSURANCE FOR CORPORATE AGENTS

The Board of Trustees may adopt a resolution authorizing the purchase and maintenance of insurance on behalf of any agent of the corporation (including a trustee, coordinator, employee or other agent of the corporation) against any liability other than for violating provisions of law relating to self-dealing (Section 5233 of the California Nonprofit Public Benefit Corporation Law) asserted against or incurred by the agent in such capacity or arising out of the agent's status as such, whether or not the corporation would have the power to indemnify the agent against such liability under the provisions of Section 5238 of the California Nonprofit Public Benefit Corporation Law.

ARTICLE 6.
COORDINATING COUNCIL

SECTION 1. DEFINITION

The Coordinating Council is the corporate body composed of at least _____ coordinators selected by the membership.

SECTION 2. COMPOSITION

The Coordinating Council shall consist of the following coordinators and those Websters who collaborate in accomplishing the unit responsibilities:

CONVENOR
ARCHIVIST
FINANCE
MEMBERSHIP
PUBLICATIONS
PUBLIC RELATIONS
PLANNING
RESEARCH
EDUCATION

SECTION 3. POWER

The Coordinating Council shall have the power delegated to it by the Board of Trustees including the duty and power of acting for all Websters in the intervals between meetings of the Annual Gathering, and other duties and powers as defined in these Bylaws.

SECTION 4. ACCOUNTABILITY

The Coordinating Council shall report and be accountable to the Board of Trustees.

SECTION 5. RESPONSIBILITIES OF THE COORDINATING COUNCIL

The Coordinating Council shall:

- (a) exercise the corporate responsibility and fiduciary duties of the corporation consistent with applicable provisions of law.
- (b) establish corresponding work groups for each unit.
- (c) establish policies and procedures for the transaction of business, coordination of corporation activities and operation.
- (d) establish financial policies and procedures, adopt the budget, submit all books annually for audit, and present an annual financial statement to the membership at the Annual Gathering.
- (e) establish policies and procedures for approving publications and other printed materials prior to their distribution.
- (f) establish policies and procedures for the collection, analysis, and distribution of information.
- (g) establish standing and special committees of the Board as deemed necessary for the performance of its duties, and define the purpose and authority of such committees.
- (h) control the use of the official Cassandra insignia and the procurement and sale of replicas thereof.
- (i) ensure the maintenance of a national archive for the collection and preservation of documents and other materials that have contributed and continue to contribute to the historical and cultural development of nursing.
- (j) assume other duties as may be provided for elsewhere in these Bylaws and by the Board of Trustees.

SECTION 6. DUTIES OF THE CONVENING COORDINATOR

The Convening Coordinator shall:

- (a) call Coordinating Council gatherings.
- (b) serve on a rotating basis as a central contact person for all coordinators.
- (c) receive all communications and refer to appropriate coordinators.
- (d) coordinate activities of Cassandra.
- (e) provide an annual report.

SECTION 7. DUTIES OF THE ARCHIVIST

The Archivist shall:

- (a) maintain all official records of Cassandra.
- (b) keep records of meetings of the Coordinating Council and Board of Trustees.

(c) properly notify trustees and coordinators of all meetings.

(d) be responsible for passing on records to the next archivist.

(e) provide an annual report.

(f) serve on a rotating basis as a central contact person for all coordinators.

SECTION 8. DUTIES OF THE FINANCE COORDINATOR

The Finance Coordinator shall:

(a) keep and maintain financial records.

(b) receive contributions and transfer appropriate information to the membership and archival coordinators.

(c) deposit or cause to be deposited all income.

(d) disperse or cause to be dispersed the funds of Cassandra in accordance of the policy and procedure of the association.

(e) serve on a rotating basis as a central contact person for all coordinators.

SECTION 9. MEMBERSHIP COORDINATOR

SECTION 10. PUBLICATIONS COORDINATOR

SECTION 11. PUBLIC RELATIONS COORDINATOR

The Public Relations Coordinator shall:

(a) establish policies and procedures for the sale of Cassandra products.

(b) facilitate the development or initiation of ideas for new Cassandra products.

(c) receive and refer requests for public speaking invitations.

(d) provide an annual report.

(e) serve on a rotating basis as a central contact person for all coordinators.

SECTION 12. PLANNING COORDINATOR

SECTION 13. RESEARCH COORDINATOR

SECTION 14. EDUCATION COORDINATOR

ARTICLE 7. EXECUTION OF INSTRUMENTS, DEPOSITS AND FUNDS

SECTION 1. EXECUTION OF INSTRUMENTS

Trustees, except as otherwise provided in these Bylaws, may by consensus authorize any coordinator of the corporation to enter into any contract or execute and deliver any instrument in the name of and on behalf of the corporation, and such authority may be general or confined to specific instances. Unless so authorized, no coordinator or employee shall have any power or authority to bind the corporation by any contract or engagement or to pledge its credit or to render it liable monetarily for any purpose or in any amount.

SECTION 2. CHECKS AND NOTES

Except as otherwise specifically determined by resolution of the Board of Trustees, or as otherwise required by law, checks, drafts, promissory notes, orders for the payment of money, and other evidence of indebtedness of the corporation shall be signed by the Finance Coordinator.

SECTION 3. DEPOSITS

All funds of the corporation shall be deposited from time to time to the credit of the corporation in such banks, trust companies, or other depositories as the Board of Trustees may select.

ARTICLE 10.
BYLAWS

SECTION 1. AMENDMENT

Subject to any provisions of law applicable to the amendment of Bylaws of public benefit nonprofit corporations, these Bylaws, or any of them, may be altered, amended, or repealed and new Bylaws adopted by approval of the Websters of this corporation.

ARTICLE 11.
AMENDMENT OF ARTICLES

SECTION 1. AMENDMENT OF ARTICLES

Any amendment of the Articles of Incorporation may be adopted by approval of the Board of Trustees.

SECTION 2. CERTAIN AMENDMENTS

Notwithstanding the above section of this Article, this corporation shall not amend its Articles of Incorporation to alter any statement which appears in the original Articles of Incorporation and of the names and addresses of the first Trustees of this corporation not the name and address of its initial agent, except to correct an error in such statement or to delete either statement after the corporation has filed a "Statement by a Domestic Non-Profit Corporation" pursuant to Section 6210 of the California Nonprofit Corporation Law.

ARTICLE 12.
PROHIBITION AGAINST SHARING
CORPORATE PROFIT AND ASSETS

SECTION 1. PROHIBITION AGAINST SHARING
CORPORATE PROFIT AND ASSETS

No trustee, coordinator, employee, or other person connected with this corporation, or any private individual, shall receive at any time any of the net earnings or pecuniary profit from the operations of the corporation, provided, however, that this provision shall not prevent payment to any person or reasonable compensation for services performed for the corporation in effecting any of its public or charitable purposes, provided that such compensation is otherwise permitted by these Bylaws and is fixed by resolution of the Board of Trustees; and no such person or persons shall be entitled to share in the distribution of, and shall not receive, any of the corporate assets on dissolution of the corporation. All trustees of the corporation shall be deemed to have expressly consented and agreed that on dissolution of the affairs of the corporation, whether voluntarily or involuntarily, the assets of the corporation, after all debts have been satisfied, then remaining in the hands of the Board of Trustees, shall be distributed as required by the Articles of Incorporation of this corporation and not otherwise.

WRITTEN CONSENT OF TRUSTEES ADOPTING BYLAWS

We, the undersigned, are all of the persons named as the initial Trustees in the Articles of Incorporation of Cassandra: Radical Nurses Network, a California nonprofit corporation, and, pursuant to the authority granted to the Trustees by these Bylaws to take action by written consent without a meeting, consent to, and hereby do, adopt the foregoing Bylaws as the Bylaws of this corporation.

SECTION 4. GIFTS

The Board of Trustees may accept on behalf of the corporation any contribution, gift, bequest, or devise for the charitable or public purposes of this corporation.

ARTICLE 8.
CORPORATE RECORDS,
REPORTS AND SEAL

SECTION 1. MAINTAINANCE OF CORPORATE RECORDS

The corporation shall keep at its principal office in the State of California:

(a) minutes of all gatherings of Trustees and coordinators, indicating the time and place of holding such gatherings, whether regular or special, how called, the notice given, and the names of those present and the proceedings thereof.

(b) adequate and correct books and records of account, including accounts of its properties and business transactions and accounts of its assets, liabilities, receipts, disbursements, gains and losses.

(c) a record of the trustees, indicating their names and addresses.

(d) a copy of the corporation's Articles of Incorporation and Bylaws as amended to date, which shall be available to each trustee of the corporation.

SECTION 2. CORPORATE SEAL

The Board of Trustees may adopt, use, and at will alter, a corporate seal. Such seal shall be kept at the principal office of the corporation. Failure to affix the seal to corporate instruments, however, shall not affect the validity of such instrument.

SECTION 3. ANNUAL REPORT

The Board of Trustees shall require an annual report to be furnished not later than one hundred and twenty (120) days after the close of the corporation's fiscal year to all trustees through publication in the newsjournal:

(a) the assets and liabilities, including the trust funds, of the corporation as of the end of the fiscal year.

(b) the principal changes in assets and liabilities, including trust funds, during the fiscal year.

(c) the revenue or receipts of the corporation, both unrestricted and restricted to particular purposes, for the fiscal year.

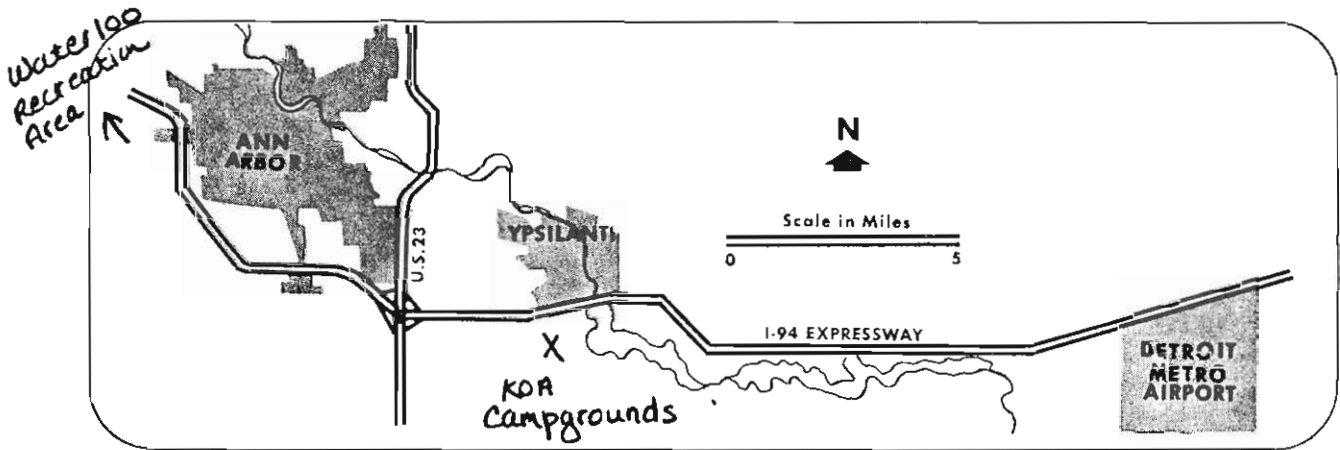
(d) the expenses or disbursements of the corporation for both general and restricted purposes, during the fiscal year.

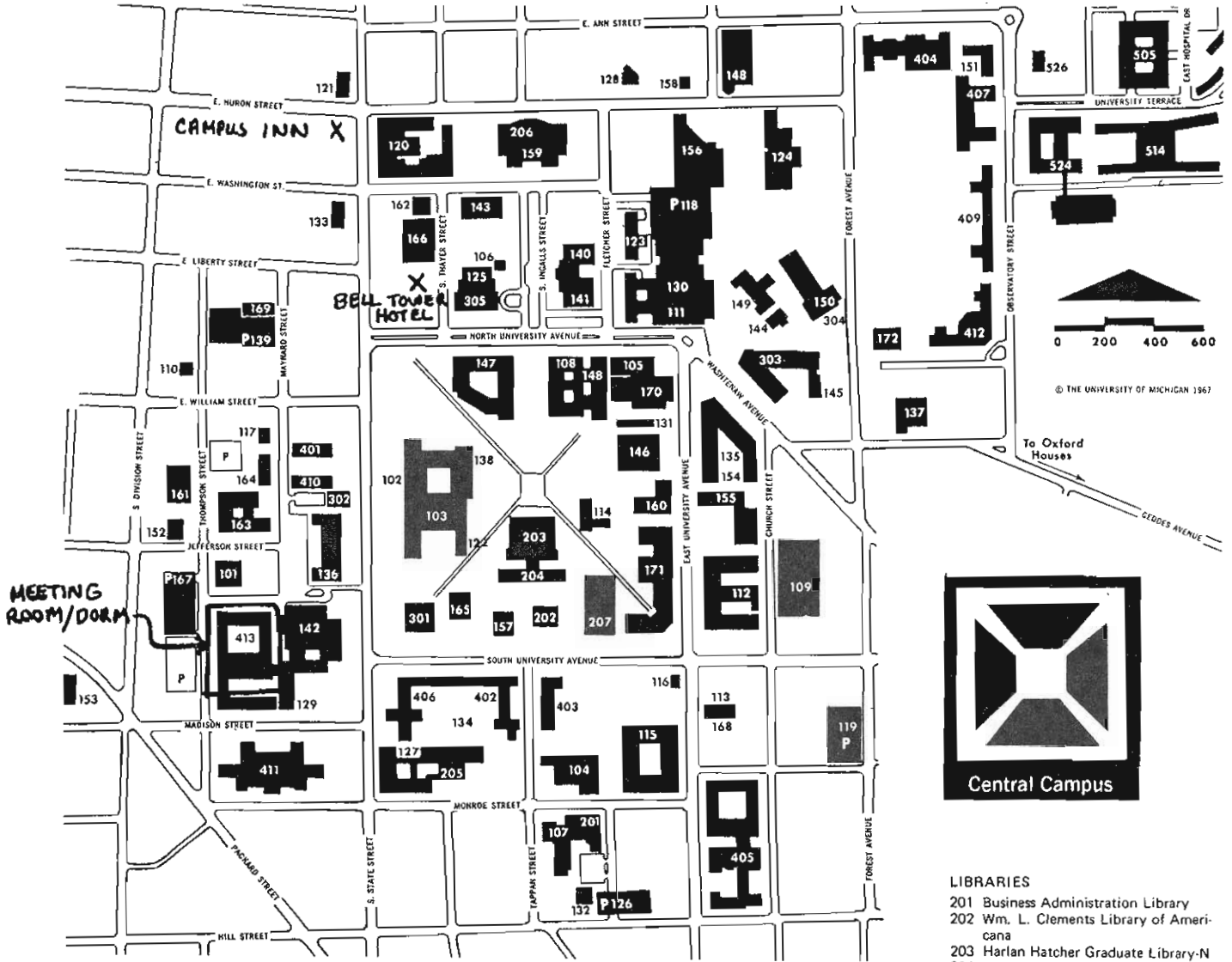
The annual report shall be accompanied by any report thereon of independent accounts, or if there is no such report, the certificate of the financial coordinator that such statements were prepared without audit from the books and records of the corporation.

ARTICLE 9.
FISCAL YEAR

SECTION 1. FISCAL YEAR OF THE CORPORATION

The fiscal year of the corporation shall begin on the first day of July and end the last day of June in each year.





- LIBRARIES**
- 201 Business Administration Library
 - 202 Wm. L. Clements Library of Americana
 - 203 Harlan Hatcher Graduate Library-N
 - 204 Harlan Hatcher Graduate Library-S
 - 205 Law Library
 - 206 Michigan Historical Collections
 - 207 Undergraduate Library

- MUSEUMS**
- 301 Alumni Memorial Hall (Museum of Art)
 - 302 Kelsey Museum of Archeology
 - 303 A. G. Ruthven Museums Building (Anthropology, Paleontology, Zoology, and Exhibit Museum)
 - 304 University Herbarium
 - 305 Stearns Collection

- RESIDENCE HALLS**
- 401 Betsy Barbour House
 - 402 John Cook Residence
 - 403 Martha Cook Building
 - 404 Couzens Hall
 - 405 East Quadrangle (Residential College)
 - 406 Lawyers Club
 - 407 Alice Crocker Lloyd Hall
 - 514 Mary Markley Hall
 - 409 Mosher-Jordan Halls
 - 410 Helen Newberry Residence
 - 411 South Quadrangle
 - 412 Stockwell Hall
 - 413 West Quadrangle
 - P Public Parking

CENTRAL CAMPUS

- 101 Administration Building
- 102 James B. Angell Hall
- 103 Angell Auditorium Unit
- 104 Architecture and Design
- 105 Barbour Gymnasium
- 106 Burton Memorial Tower
- 107 Business Administration
- 108 Chemistry
- 109 Church St. Parking Structure
- 110 Continuing Education of Women
- 111 Dental Building
- 112 East Engineering
- 113 East University Building
- 114 Economics
- 115 School of Education Building
- 116 Education Office Building
- 117 Extension Service
- 118 Fletcher St. Parking Structure
- 119 Forest St. Parking Structure
- 120 Henry S. Frieze Building
- 121 Harris Hall
- 122 Haven Hall
- 123 Health Service
- 124 Heating Plant
- 125 Hill Auditorium
- 126 Hill St. Parking Structure
- 127 Hutchins Hall
- 128 Institute of Human Adjustment, Counseling Division
- 129 International Center
- 130 Kellogg Foundation Institute
- 131 Key Office
- 132 Landscape Architecture
- 133 Lane Hall
- 134 Law Quadrangle
- 135 Clarence C. Little Science Building
- 136 Literature, Science, and the Arts Building
- 137 Margaret Bell Pool
- 138 Mason Hall
- 139 Maynard St. Parking Structure
- 140 Lydia Mendelssohn Theater
- 141 Michigan League
- 142 Michigan Union
- 143 Modern Languages Building
- 144 Museums Annex
- 145 Museums Addition
- 146 Natural Resources
- 147 Natural Science
- 148 Neuroscience Building
- 149 North Hall
- 150 North University Building
- 151 Observatory
- 152 Parking and Publications Building
- 153 Perry Building
- 154 College of Pharmacy Building
- 155 Physics and Astronomy
- 156 Power Center for the Performing Arts
- 157 President's Residence
- 158 Psychological Clinic
- 159 Rackham Building
- 160 Randall Laboratory
- 161 Institute for Social Research
- 162 Social Work Annex
- 163 Student Activities Building
- 164 Student Publications Building
- 165 Tappan Hall
- 166 Thayer St. Parking Structure
- 167 Thompson St. Parking Structure
- 168 University Press
- 169 University Television Center
- 170 Waterman Gymnasium
- 171 West Engineering Building
- 172 Women's Athletic Building
- 505 E. Medical Center Parking Structure
- 524 School of Public Health
- 526 Simpson Memorial Institute

The following information is printed on the back of the room reservation form that was provided by the University of Michigan; we have reproduced it here for your information. The front of the form is included as an insert in this Newsjournal for those who wish to make room reservations for the gathering.

The WEST QUADRANGLE/MICHIGAN UNION back-to-back complex houses both the Cambridge House Hotel and the Short Term University Guest Housing residence hall rooms. The complex is conveniently located on Central Campus close to classrooms, meeting rooms, libraries, shopping and excellent restaurants.

Cambridge House (formally the Michigan Union Hotel) provides daily maid service, phone, air conditioning, private baths, television, and parking. The double rooms are equipped with two twin beds, and better than half of the rooms are single rooms. A portion of the doubles can accommodate additional occupancy with the use of daybeds and cots.

Residence Hall Rooms in West Quadrangle contain twin beds or bunk modular furniture, a desk, lounge chair and University Centrex phone service. Maid service and linen exchange can be arranged for a nominal fee.

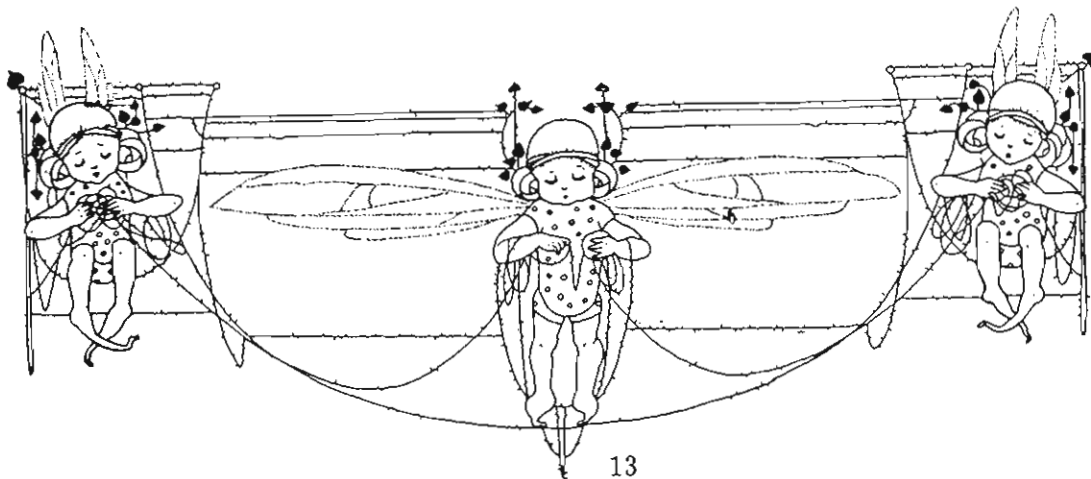
University Food Service is available at the Summer School Residence Hall. It is cafeteria style and meal tickets can be purchased at the front desk of that building.

The BAITS COMPLEX is located on North Campus near the Moore Music Building, the Art and Architecture Building and Engineering's Chrysler Center. Some food service is available at the North Campus Commons or at the various restaurants within walking distance. Conferees are welcome to take the free University Shuttle Bus service to Central Campus.

Each house in Baits has a variety of room combinations. In each room bloc there are accommodations for singles, doubles and a limited number for families. Depending on the combination assigned, as many as six or as few as two persons share a communal bath. There are no private baths at Baits. Some blocs have additional study rooms, however, these are limited and cannot be reserved. Rooms have two twin beds or bunk modular furniture, desk, lounge chair and University Centrex phone service. Maid service and linen exchange can be arranged for a nominal fee. Baits has both air conditioned and non air conditioned rooms available.

ADDITIONAL INFORMATION

1. Room assignments are made according to availability at the time of check-in.
2. Roommate arrangements must be made prior to making reservations. Both parties should complete a reservation form dividing the double rate deposit in half for each person. Reservation forms and deposits should be mailed together.
3. CHECK-IN is after 3PM; however, rooms may be occupied as they become available.
4. CHECK-OUT is 12 NOON: Failure to do so will result in a charge for an extra night.
5. Cooking is not permitted in the Residence Halls because of Fire Safety Regulations. Food Service is available in the Summer School Residence.
6. The Front Desk of the building will sell the appropriate parking or recreation permit and take emergency messages.
7. West Quad/Cambridge House has a 24 hour desk, Baits does not. Information concerning the assigned hall will accompany your confirmation. Please be advised.
8. Housing will attempt to provide you with your first choice of accommodations; however, it cannot be guaranteed. If you are not satisfied when you receive your confirmation please contact us for a refund. The Conference Service Office will refund deposits only upon receipt of written cancellation prior to the contracted arrival date.





THE 10th MICHIGAN WOMYN'S MUSIC FESTIVAL

AUGUST 8, 9, 10, 11, 1985
HART, MICHIGAN

Make Womyn's History! If you've ever been a part of the Michigan Womyn's Music Festival — this is the year to come and celebrate the culture we've built. If you've ever thought of coming to Michigan for The Festival, this is the year to share the riches that The Festival offers.



We've moved onto our own land — the most beautiful womyn's camping festival grounds we know. We've grown to three full stages of music (including our new Acoustic Stage with dance and theater) and this year over eighty musicians will be at The Festival to perform for the Ten Year anniversary, including Ferron, Holly Near, Teresa Trull and Barbara Higbie, Linda Tillery, Ronnie Gilbert, Casselberry and Dupre, Deuce, Alix Dobkin, Maxine Feldman, Therese Edell, Somethin' Special, Kay Gardner, Mary Watkins, Debbie Fier, Nancy Vogl, Toshi Reagan, Hunter Davis, Lucie Blue Tremblay, Chevere, Edwina Lee Tyler & A Piece of the World, Deidre McCalla, Adrienne Torf, Diane Lindsay and Sue Fink, Rhiannon & Althea Waites, Make It Mime, Lillian Allen, Judy Sloan, Musica Femina, Robin Tyler, Sun Woman Ensemble, Sista Boom.

Women come together from every state and a dozen different countries to create a womyn's community like none other.

So come if you love womyn's music, and be ready for dancing, workshops, campfire sing-a-longs, new games, women's crafts, roomy wooded camping, movies under the stars or just talking and having fun with lots of other womyn. Bring your friends, travel safely — and we'll see you in August!

Advance Prices: 4-Day: \$90-110
3-Day: \$75-95 (Fri, Sat, Sun ONLY)
2-Day: \$60-70 (Sat & Sun ONLY)
1-Day: \$30-35 (Sunday ONLY)

For tickets & info send S.A.S.E. to:
W.W.T.M.C. 1501 Lyons Street Mt. Pleasant, MI 48858

FROM A LABORER'S VIEW

Margaret Snell

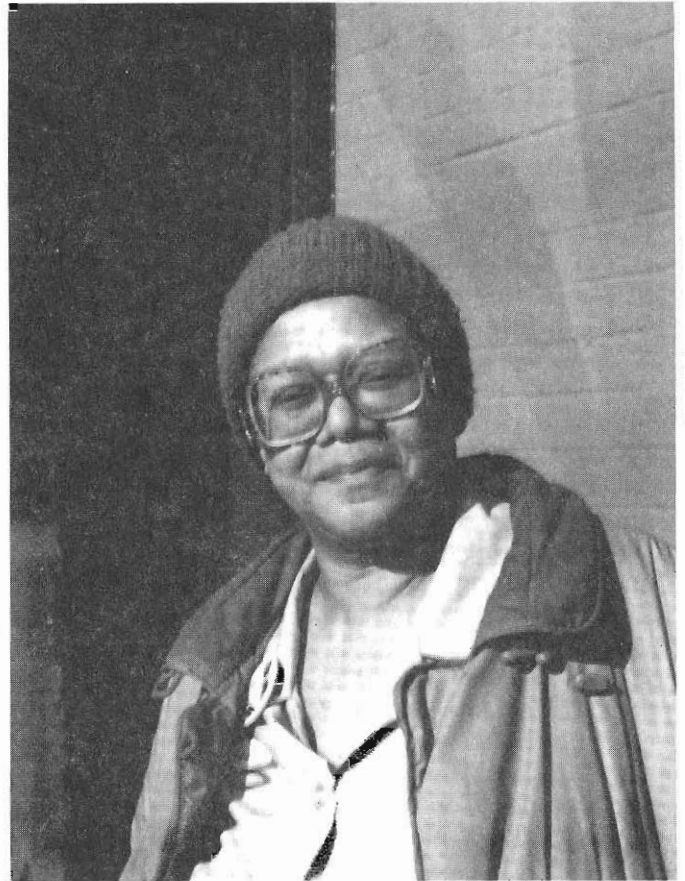
Reagan, the actor in the role of Reagan the president, produced and directed by the corporate state, is now starring in the comedy-drama entitled "Get the Government Off Our Backs!" This is simply an attempt to draw the people's attention from the greedy, exploitative and corrupt corporations and directing it against "government."

The aim of this scenario is "deregulation" of industry. The number one purpose is to destroy affirmative action, encourage union busting and to hand over the resources of the United States to the unrestricted plunder of the corporations. All this is being done under the guise of "putting God back into our lives." However the real purpose is to put megabucks back into corporate pockets. The government under "B" actor Reagan has become the most open and aggressive proponent of big business, in all policy spheres — civil rights, labor, foreign policy and social programs. The effects of these policies have been catastrophic to Blacks, Hispanics and women.

Reagan's corporate government is the main adversary of equal rights and affirmative action. To show his utter contempt for Black Americans, he has placed at the head of the Civil Rights Commission, an old house negro by the name of pendleton. For the first time in history, the Civil Rights Commission, under hankerchief head pendleton, has turned into an opponent of equality and leads the attacks against equal rights for the racially and nationally oppressed and women.

The Reagan program for women can only be compared to Hitler's "Kinder, Kuche and Kirche." The Reaganite agenda for women is to force them out of new kinds of jobs to which they have won access, to reduce the wages of both women and men, and to attack affirmative action gains. Reagan's policies have had an adverse effect, to say the least, on women's equality in a most vital area —the wage and job front. Access to jobs, training and upgrading are increasingly being shut to women; forcing women in large numbers into the ranks of the un and underemployed and the welfare poor.

I believe there are five theoretical approaches to the questions of women's equality that encompass all of the existing trends in the Feminist Movement. They are traditional conservative, bourgeois-liberal, petty-bourgeois radical, socialist feminist, and Marxist. In future articles I shall discuss each of these approaches.



MARGARET SNELL

Photo by Anne Montes

Margaret Snell is a third generation native born Buffalonian, she was educated in the public school system. She attended Jefferson School of Social Science. She is a member of the Union for Radical Political Economics. Of late she received her certificate from the Center for Political Economics, at Hampshire College in Amherst, Massachusetts. Her life is dedicated to radical change. She was with the first March on Washington, D.C. in 1964 and was an active demonstrator and advocate in the struggle for voting rights for Blacks. Margaret is a middle-aged Black woman who earns her bread by factory labor and the food for her soul by her "scribblings." A life long feminist, her life is dedicated to the liberation of her people, her sex and her class - in that order, as one cannot be liberated without the liberation of all.

Jini Miller read the following in Ms. Magazine January 1984 and wrote to Ms. for permission to reprint the poem in CASSANDRA. Ms. forwarded the request to the translator of the poem who granted us permission to reprint it. Thank you, Jini.

CASSANDRA WITH A TAIL

By Blaga Dimitrova (translated by John Balaban)

A cat stretches from one end
of my childhood to the other.
Those winters, by the hearth,
it spun a yarn of smoke into a ball.
At night, it flickered half-moon eyes
in the dark corners of the house.
By day, its tail twirled a signature
on the sky and pawed the air with grace,
gathering in its coat
the electricity of the storm
and smoothing it into glossy fur.
Wise. With cottony steps.

Self-possessed.

Just once she jumped out of her skin.
One peaceful evening
her tail shot up like a bottle brush
and she leapt onto the chandelier
wailing like an ambulance
as if all the voltage in her fur
exploded out in flashing rage.
None of us understood the cat's prophecy.
We hissed at her to calm down....And
the earthquake nearly flattened the house.
The oracular cat disappeared,
with my childhood, forever.

But her miracle stayed with me.
Tonight, to my surprise,
she crept inside me.
Bristling with shock, I shook
and bounded back from wall to wall
yammering up a piercing cry
to call you wherever you are:
Listen. You have so little time.
Grab what you can,
whatever is dear, whatever you love.
Deep in the belly of the earth
an atomic blast is swelling up,
nurtured by electronic brains,
and produced by pulsing robots.
This green careening planet
spins blindly in the dark
so close to annihilation.
Listen. No one listens. Meow.

Blaga Dimitrova is a noted Bulgarian poet who has also received acclaim for her novels and plays. John Balaban is a poet and the author of "Blue Mountain"

Want to share something with us? Have a response or idea about something in this issue? Original illustration? Send your letter, news, views, and ideas for the next issue!

LIFELINE DATE FOR SEPTEMBER
NEWSJOURNAL
July 15, 1985





EARTHMOTHERS: VENUS

Original drawing by Barbara Hock, selected for "WomanExpress" issue of Common Ground: Western New York Women's Newsjournal and EMMA 1985 postcard series. Reprinted by permission of the artist.

THE EVOLUTION OF SILENCE

Silence, once feared, discomforting but imposed
Now cherished and sought after - the space
and peace of being alone
Yet impenetrable and oppressive when enforced
by lack of connectedness.
In one peace of being alone, in the other the
loneliness of being unheard.

I wrote this in an attempt to understand
the oppressive silence in my marriage. On
hearing the story of Cassandra and Zeus I was
reminded of this poem.

Shared by Darrah W. Kimball

MENOPAUSE: AN UPDATE
Ann Voda of the Utah Web

In October of 1984 I attended the Fourth International Menopause Congress in Orlando, Florida along with 600 plus individuals interested in menopause or who had a vested interest in menopausal women. The majority of persons in attendance to hear and report on this uniquely female event were male gynecologists. The first day's plenary session was to set the tone for the 5 days that would follow. And, indeed, it did! In the closing statements of his paper, Barry Wren, an Australian gynecologist said, "Menopause is a hereditary, sex-linked estrogen deficiency disease," which brought forth quite a roar from the crowd. Needless to say, those of us who have come to know that menopause is not a disease, were stunned. Wren's paper was followed by Sonja McKinlay, a social scientist, but for the most part the excellent presentation and the content of her paper fell on deaf ears.

Throughout the 5 days of the Congress the predominant, implicit message in almost all biomedical type papers was that menopause is a deficiency disease treatable by, you guessed it, hormone replacement. Many papers were devoted to how to replace estrogen (pill vs transdermal vs implant vs injection vs who knows what we missed.) The overriding, all consuming obsession with estrogen replacement is the need to protect us, women, from a life of living decay; in other words, osteoporosis. So what else is new? It is well known that only a small percentage of women (about 25%) are at high risk for developing osteoporosis. But, because most of the research money is going into how to treat osteoporosis or prevent it, we are still a long way from developing any really good way of identifying just who the woman is that is at high risk. Thus, estrogen replacement for ALL menopausal women is recommended so as to be sure to PROTECT the woman who is at high risk even though no one is absolutely sure just who that high-risk woman is. The estrogen replacement attitude was dominant despite the fact that several papers were presented on osteoporosis making explicit that there are no reliable prevalence estimates (25% is just a best guesstimate), and the tremendous need to develop methods and instruments to screen women in order to diagnose osteoporosis in the early stages for those high-risk women.

Across the board hormone treatment recommended for all menopausal women is consistent with the patriarchal paternalistic value

system of medicine, that is, "I know what is best for you little woman — I'll protect you!" The "Biology is Destiny - Menopause as Disease" attitude continues to frustrate and confuse women and conscientious care providers. As a menopause researcher, I know that women do not want to take drugs or hormones and they do not think of themselves as diseased or in a state of living decay.

Not all was gloom and doom at the Congress. One positive outcome of the Congress was that I was not alone with my concerns about how menopausal women were viewed. On the second day of the Congress sixteen enraged women met for dinner to discuss the derogatory nature of some of the papers. There was general agreement by the women who gathered that an alternative point of view of menopause was needed. An outcome of the gathering was the formation of the "Women's Caucus" of the International Menopause Society. Efforts are now under way to have the Women's Caucus included in the planning of the program for the 1987 Congress to be held in Rome. Efforts are also under way to have a series of articles published as a supplement to MARUTITAS, the Journal of the International Menopause Society, such articles to have a nonbiomedical perspective. Fourteen additional women's names have been added to the Caucus membership. The significance of this event is that two Cassandrans, Kathleen MacPherson and myself, were instrumental in forming the Caucus and outlining future goals. Three cheers for Radical Feminist Nurses!

There were other concerns related to papers presented at the Congress. Except for a handful of women scholars who presented research at the Congress most research continues to be done by men. In addition to being reductionistic, some researchers continue to do "quick and dirty" studies and even though research may be labeled as psychosocial or behavioral, the basic assumption underpinning the research is that menopause is a period of distress and/or dysfunction. A methodological concern raised in the anthropology session, which was an excellent session, dealt with the bias introduced by male researchers who study a uniquely female event despite the known reluctance of women respondents to share information with male interviewers.

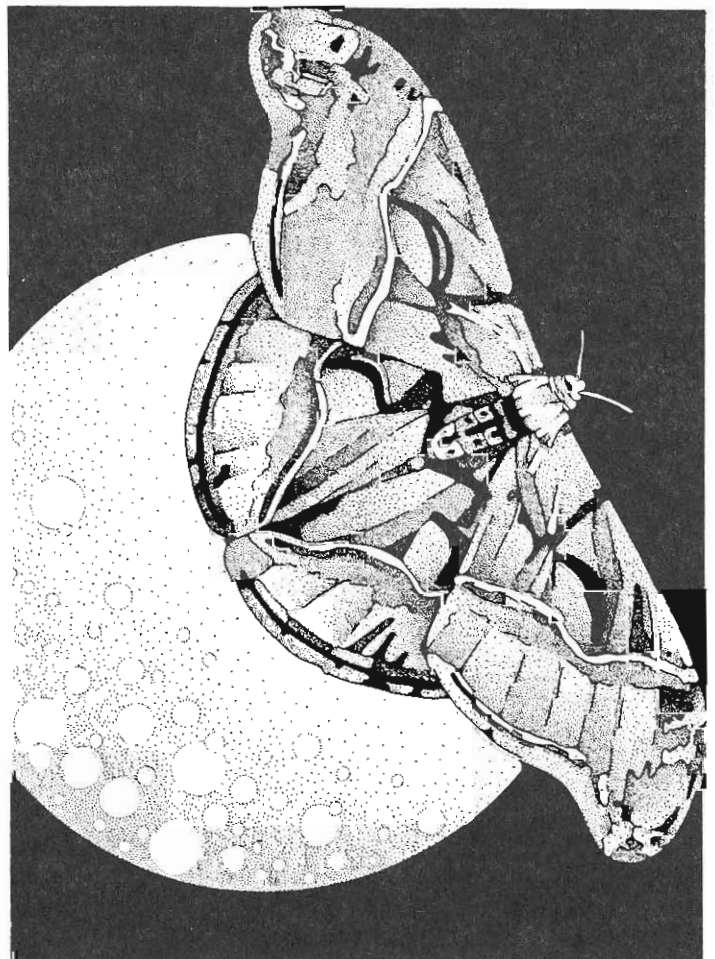
Probably the most overriding concern related to the Conference was the polarization or "camps" into which Congress attendees fell.

The one camp is well known to feminists as reductionistic; that is, the biomedical camp and the ideology of menopause as disease with research on menopause being focused on fluctuating hormones, diseased ovaries or uterus and methods of hormone replacement. The second camp is also well known; it appears friendly and non-reductionistic. This camp has been labeled the "social or no-effect" camp by Randi Koeske of the University of Pittsburgh. By and large, it is comprised of behavioral scientists who deny that changes occur during the transitional years. According to this camp, if women experience mood changes, headaches, etc. these are interpreted as "reactions" to life changes during the transition. This approach to menopause is also reductionistic in that women are reduced to reactive agents. Perhaps the most serious concern regarding this latter approach to the study of menopause is the potential to invalidate women who are indeed experiencing changes in their bodies which are due to fluctuating hormones. (Yes, Virginia, those changes are real and should not be ignored.)

In the first issue of the CASSANDRA Newsletter I urged nurses to examine the theoretical and conceptual frameworks that have been borrowed from other disciplines, notably psychology, sociology, education, etc. Implicit in my argument was the idea that the borrowed frameworks were flawed since such theories had been developed out of the perspective of the scientists in those disciplines. Not only did these so-called scientists do their sciencing using the patriarchally conceived positivistic reductionistic method of science, but I concluded by saying that as nurses, we needed to question theories we were borrowing since it appeared that we were continually trying to fit our research findings into those borrowed theories. More often than not, we could not fit the facts or the findings into certain theories. I would now like to take this idea one step further. As feminists, we need to begin to critique theories using the method of feminist critique. We need to come to grips with the fact that the theories and knowledge we have borrowed and been taught at the outset are methodologically flawed, value laden, and biased since this knowledge is the knowledge of men, generated by men, who consider men, their lives and their worlds as the human norm. In other words, menopause is a disease because men do not experience it.

A feminist approach to all research is surely needed. A feminist perspective toward menopause research is critical since the addition of facts about a uniquely female event using the methods of reductionistic science which reduces woman to her ovaries, uterus, and breasts merely continues to distort and fragment the totality of the experience. We need to be alert and we need to critique the theoretical underpinnings of menopause research.

We have a lot of work to do to dispel the disparaging image of women in general, and particularly as women close their reproductive lives to enter the productive years beyond menopause. The mass media hype about osteoporosis as the crippler of women has women confused and, in some cases, has frightened women. You can be sure I will follow the menopause- osteoporosis- hormone replacement controversy very closely and will report on any new unbiased or biased research in future newsletters.



RE-SOURCES



LOOK TO THE WOMEN FOR COURAGE: Stories from the Seneca Encampment for Peace and Justice. A slide presentation by JEB (Joan E. Biren) "In 1983 women opposed to the deployment of new first strike nuclear weapons by the U.S. set up a Peace Camp at the Seneca Army Depot in NY state. This presentation brings you the power and determination of the thousands of women who participated in the non-violent direct actions of the Encampment. It also shows you their anger, fear, elation and celebration. There are sections on the organization and functioning of the Encampment as well as on the threat posed by the increasing arms build-up. The slide show portrays the opening of the Encampment on July 4th. It traces the summer's events, with special attention on the large August 1st demonstration and the trial of the 'Waterloo 54,' and concludes with the civil disobedience actions on October 24th."

The slide presentation is available in two versions: (1) a 42 minute slide show with accompanying tape, script, organizer's and information packet. Rental: \$35 plus postage and insurance. Contact Washington Peace Center, 2111 Florida Avenue NW, Washington, DC 20008. Telephone 202/234-2000 (2) a personal appearance by JEB with a two hour version of the slide show. \$200 plus travel expenses. Contact Glad Hag Books, P.O. BOX 2934, Washington, DC, 20013. Telephone 202/399-0117

MEASURE OF WORTH a new film about Anorexia Nervosa released by IRIS FILMS. A 15 minute color documentary by Kristin Porter, the film is described as a "must viewing for health professionals, teachers, counselors and junior high school and high school students. For preview or review information, contact Elizabeth Stevens, IRIS FILMS, Iris Feminist Collective, Inc., Box 5353, Berkeley, CA 94705. Telephone 415/549-3192.

PERIOD PIECE is a 10 minute, 16mm color film explores attitudes toward menstruation produced by Emily Culpepper (who designed our CASSANDRA logo). Emily also provides workshops and lectures on menstruation. The

film emphasizes menstruation as a positive aspect of women's experience, including interviews with four women and one man, photographs, drawings, and a self-exam with mirror and speculum. Rental fee is \$50 (which is negotiable). For information about workshops and lectures, and film rental contact Culpepper, 64R Sacramento St., Cambridge, MA 02138.

WE WILL NOT BE BEATEN is a 35 minute 16mm black and white film that "revolves around the lively discussions of women recounting their experiences and difficulties in trying to escape a battering situation. The women who were interviewed for the film also participated in much of the decision-making process of production through editing and deciding what they thought was important to be communicated about their shared experience." The rental fee is \$45 (sliding scale available) from Transition House films, 25 West Street, 5th floor, Boston, MA 02111.

The ANNOTATED GUIDE TO WOMEN'S PERIODICALS list over 250 publications in the U.S. Canada, Mexico, Central and South America. Each publication is briefly reviewed by category and indexed by title and geographically. The ANNOTATED GUIDE is a 130 page, perfect bound booklet. Subscriptions are \$12/ind. (2 issues), \$20/inst & libr., \$6.50/ind. (single copy), \$10/inst. Please make checks payable to the Annotated Guide, U.S. funds preferred. Order from: Annotated Guide, Box E-94, Earlham College, Richmond, IN 47347.

WOMEN'S OCCUPATIONAL HEALTH RESOURCE CENTER NEWS is available from Columbia University, Women's Occupational Health Resource Center, School of Public Health, 600 West 168th St., New York, NY 10032. Subscriptions are \$12/individual, \$25/institutions, libraries and corporations, and includes 6 WOHRN Newsletters/year, Factsheets and announcements of other WOHRN publications as they appear during the year.

MORE READING . . .
FROM EMMA



ABOUT THE BOOKS

The Buffalo Web in cooperation with EMMA: WNY WOMEN'S RESOURCE AND CULTURAL CENTER is once again offering an exciting mail-order opportunity. This order features a wide variety of books, with titles focusing on women's health and women's issues.

All of the books listed here are paperback. A brief description of each item listed on the order form is provided to assist you in making your selection(s). We are also including a list of selections from the previous issues that are still available; there is space on the order form to fill in any of these titles that you wish to order.

Exclusively Female: A Nutrition Guide for Better Menstrual Health. \$4.50. Linda Ojeda, Hunter House, Inc., 1983. 138 pages. Describes a nutrient supplement program for women with menstrual symptoms, listings of common food sources for important vitamins and minerals, guidelines for balancing body chemistry. Focuses on menstrual physiology, but is also a good general nutrition reference.

Menopause, Naturally: Preparing for the Second Half of Life. \$10.00. Sadjia Greenwood, Volcano Press, 1984, 200 pages. Includes medical, natural, cultural and physical facts, emphasizing options and choices for healthy living. Includes discussion of menopausal physiology, osteoporosis, ERT, and guidelines for PMZ (post-menopausal zest) and how to keep it. Defers to medical opinion often and assumes heterosexuality, but contains good general information.

Woman-Centered Pregnancy. \$11.95. Ginny Cassidy-Brinn, Francie Hornstein, Carol Downer, Cleis Press, 1984, 204 pages. A valuable comprehensive Guide that includes guidelines on how to get pregnant (including donor insemination), facts about pregnancy and birth, history of the medical take-over of childbirth, problems of healthy and high risk pregnancy, and how to maintain woman-centered pregnancy and birth. Includes list of resource groups and bibliography. The authors of this book are impressive in their expertise that they bring. Ginny Cassidy-Brinn, with a B.S. in nursing in 1974, while in nursing school founded Woman-Care, A Feminist Women's Health Center in San Francisco. Carol Downer originated the concept of a self-help clinic and self-cervical examination, and was a founder of

the Feminist Women's Health Center in Los Angeles. Francie Hornstein was also a founder of the Feminist Women's Health Center in Los Angeles. This book is a valuable companion to A New View of Woman's Body (on our "titles still available" list), and How to Stay Out of the Gynecologist's Office (now out of print).

Choices: A Teen Woman's Journal for Self-Awareness and Personal Planning. \$12.95. Mindy Bingham, Judy Edmunson, Sandy Stryker, Advocacy Press, 1983, 240 pages. Attractive and informative book that includes factual information as well as diary and worksheets to guide young women in relation to money, values, decision-making, assertiveness, marriage and children, career planning, education planning, and life-style choices. Includes famous women quotes, cartoons and short stories. Proceeds from the sale of this book will benefit the Girls' Club of Santa Barbara, Inc., and contribute to the further development of programs for girls and young women aged 6-18.

The Single Mother's Survival Manual. \$12.95. Barbara Duncan, R & E Publishers, 1984, 170 pages. Provides practical and positive guidelines for decision-making and growth with experiences common to single mothers, including sexuality, parenting, employment, career-building, finances, transportation, housing, legal problems and health care.

Getting Free: A Handbook for Women in Abusive Relationships. \$7.95. Ginny NiCarthy, Seal Press, 1982, 270 pages. (with an introduction by Del Martin). Well organized, easy-to-read, an inspiring book that speaks directly to battered women who are struggling with "getting free", of the fear and dependency which hold them captive in a violent home. Deals with social and political aspects of abuse, making the decision to leave, family considerations, and what to do after leaving.

No Fairy Godmothers, No Magic Wands: The Healing Process after Rape. \$8.95. Judy H. Katz, R & E Publishers, 1985, 111 pages. A professional counselor and human relations practitioner and teacher, herself a rape victim, shares the experience which "affected my whole being, changed my perceptions, my self-concept, and altered many of my personal relationships." She discusses rape, its effects

and consequences, both immediate and long-term. A valuable resource for the woman who has experienced rape, and for women who are counselors and advocates of rape victims. Particularly important for nurses to read, because of her graphic discussion of the emergency room nurse as adversary rather than advocate.

Voices in the Night: Women Speaking about Incest. \$7.95 Toni A.H. McNaron and Yarrow Morgan (editors), Cleis Press, 1982, 187 pages. A powerful collection of writings by the survivors of incest. These personal and moving accounts are presented as essays, poems, letters, and represent the individual struggles and insights that these women bring to the experience of surviving incest. While incest is a reality for nearly 1/3 of women, the actual experience has long been shrouded in silence. Clinical and professional literature that deals with the phenomenon of incest has most generally written by men about women. That literature labels incest as a social taboo, while simultaneously documenting its prevalence. The writings in this book reflect that the real taboo is not against incest, but rather about the discussion of its occurrence. Rarely is the silence broken, and never so eloquently as it is here.

Lesbian Sex. \$9.95. Jo Ann Loulan, Spinsters Ink, 1984, 310 pages. Emphasizes knowing ones own body and becoming comfortable with ones own sexuality. Discusses barriers to sexuality, the role of fantasies, sex and disabilities, motherhood, sobriety, ageing, long-term relationships. Includes a homework section which are guidelines for self-healing and self-exploration for developing comfort with ones own sexuality and the sexuality of others.

Lesbian Nuns: Breaking Silence. \$9.95. Rosemary Curb and Nancy Manahan (editors), Naiad Press, 1985, 281 pages. An unprecedented and myth-shattering, historic publication that is a significant addition to the growing literature of women's voices speaking their own reality. "Each nun in these stories describes the individual and searing path she has journeyed to discover and face and experience the truth of herself: that she is a lesbian nun." "Breaking silence" has a double meaning. The first is the breaking of the historic silence about love between women in religious life.

The second is probably familiar only to those who have been in religious life where nuns could speak only at specified times and worked, studied and ate in silence.

Dreaming the Dark: Magic, Sex and Politics. \$8.95. Starhawk, Beacon Press, 1982, 242 pages. This is a book which attempts to move in the space where the split between the spiritual and the political does not exist. "Fusing feminism, paganism and politics, Starhawk . . . applies ritual techniques to anti-nuclear activism and shows how to create non-authoritarian group structures." An exciting articulation of spiritual vision and reclaiming of women's personal power - the power from within.

The Wanderground. \$6.95. Sally Gearhart, Alyson Publications, 1979, 196 pages. Classified either as science fiction or fantasy, this book is a haunting collection of stories from the future where women live in a women's culture apart from men or male values. Sensitively written, depicting women's harmony with nature, life and death, and how women have willfully removed themselves from the violence of men, the stories present a vision of the world as it might become. The fictional form and the restructuring of language move the reader beyond the theoretical to a vision of possibilities "To work as if the earth, the mother, can be saved. To work as if our healing care were not too late."

THE FOLLOWING TWO BOOKS are no longer in print, but we have made arrangements to purchase a limited number from a supplier who holds all remaining copies. These are classics; we will provide copies as long as our supplies last.

Lesbian/Woman. \$3.95. Del Martin and Phyllis Lyons, Bantam Books, 1972, 310 pages. This was the first, and still the most comprehensive book to describe lesbian experience. Includes an analysis of the myths and realities of lesbianism, self-image, life-styles, mothering, religion, family relationships, and overcoming discrimination. An important book for women who are lesbians, as well as any woman who wishes to understand lesbian experience.

Of Woman Born: Motherhood as Experience and Institution. \$3.95. Adrienne Rich, Norton, 1976, 318 pages. This was the first comprehensive analysis of both the experience and institution of motherhood. Writing from her own personal experience as a mother, and from her perspective as a poet and a scholar, Rich explores the historical, the political and the personal meanings of mothering for individuals and for society as a whole.

TITLES PREVIOUSLY LISTED AND STILL AVAILABLE

Peace and Power: A Handbook of Feminist Process, \$4.95

Daughters of Copperwoman, \$7.95

Motherwit: A Feminist Guide to Psychic Development, \$7.95

The Politics of Reality: Essays in Feminist Theory, \$7.95

Notes on Nursing: What it Is and What It Is Not, \$3.50

Women of Ideas and What Men Have Done to Them, \$9.95

Look Me In the Eye: Old Women, Aging and Ageism, \$5.95

A New View of Woman's Body, \$9.50

Self-help for Premenstrual Syndrome, \$4.50

Shadow on a Tight Rope: Writings by Women on Fat Oppression, \$8.95.

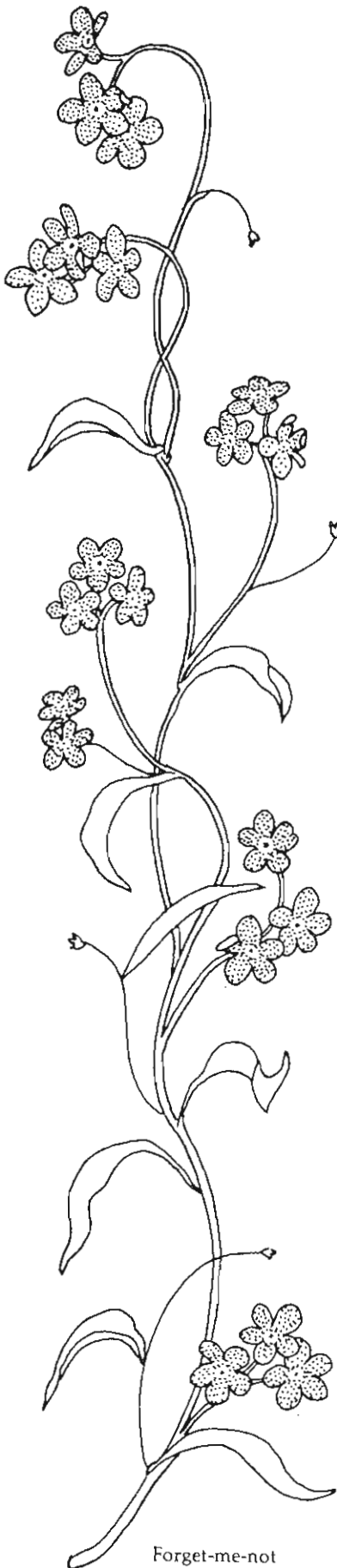
Woman's Counsel: A Legal Guide for Women, \$8.50.

Despair and Personal Power in the Nuclear Age, \$8.95.

A Manual on Nonviolence and Children, \$9.95.

International Feminism: Networking Against Sexual Slavery, Report of the Global Feminist Workshop to Organize Against Traffic in Women, \$6.00.

DEAR CASSIE
by Anne Montes



Forget-me-not

Dear Cassie,

I have been thinking of writing you a letter ever since my September newsjournal arrived. I do indeed wait by the mailbox for each issue to arrive and did wonder why the Sept. issue was late. I checked the renewal date on the previous issues, re-read the publication dates, and then had horrible thoughts that perhaps I had seen the last of Cassandra. When it arrived in the mail, I was elated.

Graduate school (traveling 100 miles and back twice a week), my family and a number of other things manage to keep me busy but the journal provides me with the desire to continue doing all of those things. Hopefully, after graduation this summer, I will be able to be more active in Cassandra and perhaps even write something for the journal.

Thank you again, just for being. You provide inspiration and hope and I'll need both in even larger doses as I get back into the hospital world of nursing after graduation.

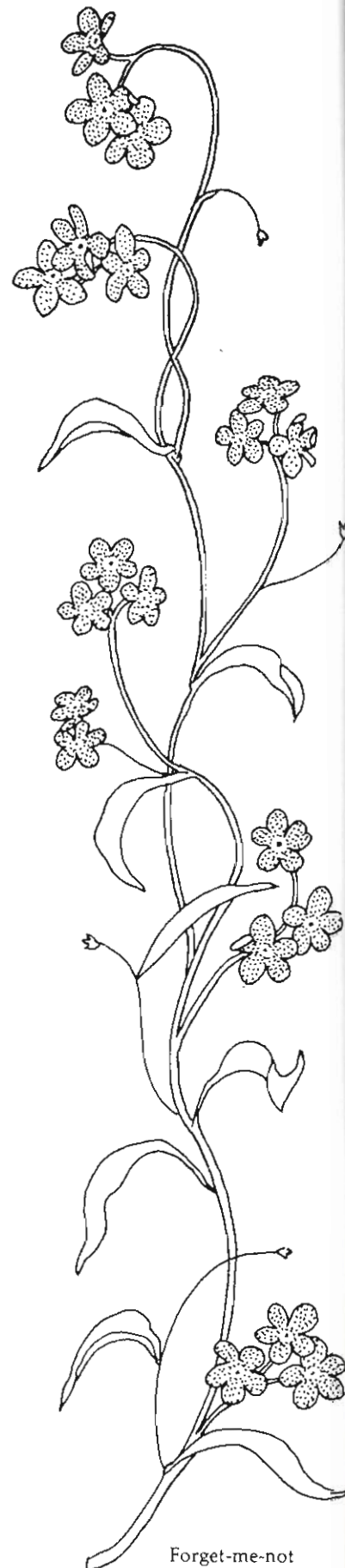
Dear Cassie,

I really enjoy our Cassandra meetings here in XXXXXXX. When our traditional nursing group fails us, it is such a relief to discuss concerns with feminist colleagues; although we are finding that that definition covers a range of women evolving. Thanks for initiating this organization.

Dear Cassandrans,

Thanks so much for these great letters!! It gives Cassie a warm feeling in her heart to hear positive crit about what goes on in gatherings and that the Newsjournal serves as a life line to others as it does to me.

How about the rest of you Cassandrans out there?? Do you all have such positive feelings? Are there no concerns about CASSANDRA that need airing? Somehow I suspect there is a broad range of opinions on all aspects of CASSANDRA and the Newsjournal - please share them with us via the Dear Cassie column. Remember letters must be signed but anonymity will be assured in this column!



Forget-me-not

COORDINATING CRONES

If you want to get INVOLVED - this is the information you need! This column contains the names and addresses of women who are coordinating our major tasks, and they need support, assistance and participation. There are some tasks that are not yet volunteered for, so if you want contribute to Cassandra's further growth, write to them!

1985 Gathering: Jackie Campbell, 1044 Western, Ann Arbor, MI 48103. If you want a 1985 gathering to occur, Jackie needs to hear from you! The Gathering will be August 3-7. There are lots of opportunities to contribute to Cassandra's growth and development. Further details available in this Newsjournal.

ANA 1986: P.K. Scheerle, 3012 19th Street, Metairie, LA 70002. This is a large task, P.K. would appreciate hearing from you if you are willing to contribute some time and energy to making our presence known at Anaheim.

Brochure: Kay Rousseau, 1506 10th Ave., San Francisco, CA 94122. If you need a supply of brochures for any purpose, write to Kay. They are available now and they look wonderful.

Cassandra's Action Network: Penny Bresnick and Muffy Eastman, 53 Middle St., Orono, ME 04473. Send material for the next issue directly to Penny and Muffy.

Feminist Educational Materials: Denise Connors and Margaret Crowley, 101-A Stark Ave., Dover, NH 03820.

Finance: Maeona Jacobs, 6757 South 2485 East, Salt Lake City, Utah 84121.

Herstorian: Kay Rousseau, 1506 10th Ave., San Francisco, CA 94122. If you take an action based on any of the items included in the Newsjournal or Cassandra's Action Network, please send a copy of your letter or an account of your action for our archives. If you have media coverage of your Web in your local area or any other information that would be valuable for our archives, send it to Kay.

Incorporation: Barbara J. Limandri, 557 59th St., Oakland, CA 94609.

Jewelry: Sue Dibble, 3998 Duncan Pl., Palo Alto, CA 94306.

Journal: Charlene Eldridge Wheeler, P.O. Box 47, Akron, NY 14001.

Membership: Peggy L. Chinn, c/o P.O. Box 341, Williamsville, NY 14221. Thanks to all Websters who have written inspirational notes. For all Websters who renew, please

remember to include the identification number from your mailing label - it makes Frigid less cranky!

Newsjournal: Charlene Eldridge Wheeler, c/o CASSANDRA, P.O. Box 341, Williamsville, NY 14221. Remember the lifeline date for contributions to the September issue is July 15, 1985.

Research Fund: Violet Malinski, 3382 Colwyn Rd., Shaker Heights, OH 44120. Watch for more details next issue.

GENDER-NEUTRAL INSURANCE

Information about two alternative approaches to group life and health insurance has arrived in our mail recently.

The National Organization for Women (NOW) offers gender-neutral rates for NOW members on health insurance, life insurance and medicare supplement insurance. Features of the health insurance, in addition to gender-neutral rates, that are not ordinarily covered by other carriers include elective abortion, reproductive care, maternity coverage equal to any other health condition, alternative as well as traditional mental health care, coverage for partner regardless of gender or marital status, and coverage for alternative health care practitioners including chiropractors, certified nurse midwives, acupuncturists, and others. The plan is underwritten by Consumers United Insurance Company of Washington, D.C. For information about NOW insurance for members, write to NOW Member Insurance, 2100 M. Street NW, Suite 311, Washington, DC, 20063 or phone toll free 1/800/424-9711. For NOW membership (\$35 - \$55 annually) write NOW, P.O. Box 7813, Washington, DC 20044.

A similar program also underwritten by Consumers United is offered through Co-op America. The health insurance plan includes a \$10,000 term life insurance program. Co-op America is an organization that serves and strengtens an alternative marketplace based on principles of responsibility, healthy environment, and self-reliance. Membership (\$15 annually) includes the alternative Co-op American catalog of products consistent with the philosophy and a year's subscription to "Building Economic Alternatives." For membership information and insurance information write Co-op America, 2100 M St. NW Suite 310, Washington, D.C. 20063.

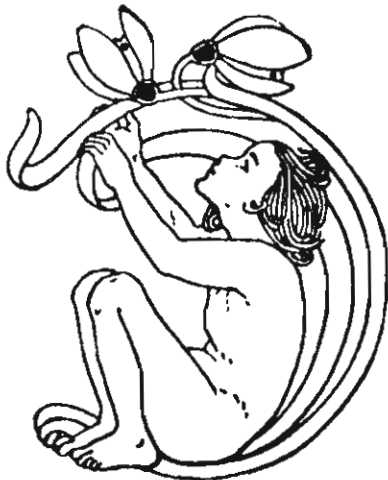
A draft of the proposed By-laws are included in this issue of the Newsjournal. We will make the needed revisions and additions at the gathering, and adopt a final form of the By-laws that can be used to complete our work for incorporation. Please read these carefully, and either send your comments and suggestions in advance or plan to discuss your ideas when we gather.

The Newsjournal and Cassandra's Action Network need to be addressed in relation to content, format, and cost. Please let us know what you do and do not like about these communications, and if you want to see them each continued 3 times a year on an alternating schedule (this was set up in New Orleans for a one year trial). Also, please review the budget report in this and the January Newsjournal in relation to cost. We will have more complete and up-to-date information about the cost at the gathering to help inform decisions.

The Budget will need to be reviewed in relation to all of our previous expenditures, as well as in relation to those purposes that we determine to be priorities in the context of our principles of unity. We will also address further planning for the Research fund - note that Violet Malinski in Cleveland has volunteered to be the Coordinator for this fund.

This is our opportunity to plan for our 1986 gathering at the ANA convention in Anaheim, California. P.K. Scheerle in New Orleans has volunteered to coordinate planning for this, and will need a lot of support and guidance to proceed!

Anything else???? Let us know!!!



BYLAWS OF CASSANDRA:
RADICAL FEMINIST NURSES NETWORK
a California Nonprofit
Public Benefit Corporation

ARTICLE 1.
OFFICES

SECTION 1. PRINCIPAL OFFICE

The principal office of the corporation for the transaction of its business is located in San Francisco County, California.

SECTION 2. CHANGE OF ADDRESS

The county of the corporation's principal office can be changed only by amendment of these Bylaws and not otherwise. The Board of Trustees may, however, change the principal office from one location to another within the named county by noting the changed address and effective date below, and such changes of address shall not be deemed an amendment of these Bylaws

Dated: , 19
Dated: , 19

SECTION 3. OTHER OFFICES

The corporation may also have offices at such other places, within or without the State of California as its business require and as the Board of Trustees may, from time to time, designate.

ANNOUNCEMENTS

battered lesbians (support groups, therapeutic issues, individual advocacy, integration of heterosexual and lesbian women in shelters); self-defense in battering situations; confrontation and accountability of batterers; confidentiality of individual vs. community involvement; police and court involvement; analysis of battering among lesbians.

Kalliope, a journal of women's art is seeking works for two upcoming special issues. The first will be an issue by women writers and artists who are "differently abled." Poetry, fiction, interviews, photographs, and visual art suitable for black and white reproduction are acceptable but the emphasis will be on poems and short stories. Lifeline: June 1, 1985. The second issue will be a humor issue. Of special interest are non-scholarly articles about women cartoonists and women humorists (query first). Lifeline is August 15, 1985.

The American Holistic Nurses Association's 1st Canadian Regional Conference co-sponsored by Nurse Healers-Professional Associates, Inc., will be June 7th & 8th, 1985. Conference goals are to provide a forum for interdisciplinary sharing among professionals interested in honoring integration in health care, to present current research findings in holistic nursing, and to strengthen relationships and offer support to those people interested in whole person care on a local, regional, provincial and state level. Inquiries should be addressed to O.I.S.E., Conference Office, 252 Bloor Street West, Toronto, M5S 1V6, Ontario.

The Women Studies Program of the University of Washington is celebrating its 15th anniversary and the summer solstice by presenting the 7th Annual National Women's Studies Association Conference "CREATING CHOICES THROUGH FEMINIST EDUCATION." The Conference will be held at the University of Washington in Seattle June 19-23, 1985. There will be a full schedule of workshops and panels dealing with feminist research, education, community activism, and cultural events. For further information write to NWSA Conference, Women's Studies Program, GN-45, University of Washington, Seattle, WA 98195 USA or call 206/543-4303



Dianthus

WEB REPORTS

From the Maine/New Hampshire Web

Websters in the Maine/New Hampshire area gathered for a potluck dinner in Nancy Greenleaf's country kitchen after an exciting research day conference sponsored by the University of Southern Maine. We spent the evening sharing bits of personal herstory that everyone present was not likely to know. We discussed plans for the gathering in Detroit and hope to get together to car/bus/van pool to Michigan in August. We made plans for another over-night gathering on May 3 at Penny Bresnick's house in Canaan, and Penny agreed to be our contact woman for the coming year.

From the Buffalo Web

Buffalo websters again participated in the celebration of International Women's Day - a coffee house featuring local women performers on Friday, and a all-day Saturday women's crafts/organizations bazaar and workshops. Saturday ended with a "Take Back the Night" march in which we carried our CASSANDRA Buffalo Web banner. It was an empowering experience, and supplying lots of food for reflection and renewed commitment. Among our spectators were men attending an auto mechanics convention who flashed their signs back at us - "battery warehouse". Local T.V. cameras were there, but they never aired the coverage because of a "top story" in the local news - the police apprehended a male murderer that day!

At our monthly gatherings we have focused discussions on chapters from Marilyn Frye's book Politics of Reality, and on events and issues in our local community. In March, Jackie Campbell was here for our gathering and we discussed plans for the gathering in Detroit - which gave all of us renewed energy and excitement for August!

From the Utah Web

The Utah Websters have been active this year and want to share news of some of those activities. In addition to our regular monthly "business" gatherings we have had two "program gatherings." In October Webster Ann Voda discussed "Principles of Feminist Research Critique" and illustrated the principles using examples from nursing research. We also hosted a February program featuring Dair Gellispe, a feminist theorist who chairs the Department of Sociology at the University of

Utah. Dair informally presented on the topic: Feminist Theory: Some Issues. Discussion was lively and Dair expressed delight in discovering a group of Radical Feminist Nurses in the Salt Lake area.

In March, we planned a Wine/Cheese Reception for Cassandrans, Friends of Cassandra, and potential Friends at the Issues in Nursing Research Conference in Park City. At least two Cassandrans from out-of-town appeared - along with nearly everyone elst attending the conference. Despite the crunch we were able to share with many the purposes and ideals of Cassandra.

In May we will do a "prime time" program at the UNA Convention on the topic: Nightingale's Prophecies: Feminist Directives for the Future. We plan to use the writings and work of Nightingale to identify her vision for women and nursing. We will then relate how Cassandra proposes to make that vision reality. Time for discussion is planned and all indications are that interest in the program is high.

Many of us will also be traveling to Seattle in May for the Annual WICHN (Western nterstate Commission for Higher Education in Nursing) research meetings. We will be planning to network with other Cassandrans attending the conference and look forward to seeing many of the West Coast Websters.

In addition to our ongoing budget work, we also have been upgrading the feminist literature holding at the University of Utah by requesting many new purchases. We also have planned some "where we are" strategies for implementing feminist ideas and ideals within our workplaces.



CONTACT WOMEN

Names and addresses of all Cassandran's are forwarded to their nearest contact woman; otherwise our mailing list is not distributed. This list is organized by zip code, so find the zip code nearest you for the nearest contact woman! If you would like to be a contact woman for your area, please let us know. If you are a contact woman and you are not listed, or if the information given here is incorrect, please notify us. Write Cassandra, P.O. Box 341, Williamsville, NY 14221.

<u>Canada:</u>			
MARGARET NIXON	1645 Broadmead Ave.	Victoria	V8P2V5
<u>Massachusetts:</u>			
KATHRYN J. FOLEY	13 Skehan St.	Somerville	02143
DIANE PINGETON	22 Brook St.	Somerville	02145
<u>New Hampshire:</u>			
JANNETTE HOFSTEDE	38 South Main St.	Concord	03310
DENISE D. CONNORS (See also Maine)	101-A Stark Ave.	Dover	03820
<u>Maine:</u>			
PENNY BRESNICK	RD 2Box 4570	Canaan	04924
<u>Vermont:</u>			
JANE DWINELL	RD2 Mason Rd.	Randolph	05060
<u>Connecticut:</u>			
BEV YAEGER	48 Ravenwood Rd.	W. Hartford	06107
ANNE TEITELMAN	26 Whittlesey Ave.	New Haven	06511
<u>New Jersey</u>			
DOROTHY VERNA	70 Wittingham Place	West Orange	07052
<u>New York:</u>			
JOANNE WAROBICK-LEMONIDES	228 Stafford Ave.	Syracuse	13206
ADRIENNE ROY	P.O. Box 341	Williamsville	14221
<u>Delaware:</u>			
SHELIA A. McMAHON	9 Timber Creek Lane	Newark	19711
<u>Maryland</u>			
ELIZABETH CALDERON	19561 Transhire Rd.	Gaithersburg	20879
<u>Virginia:</u>			
M.A. WHITE	517 Cedar Lane	Virginia Beach	23452
<u>West Virginia:</u>			
M.G. NAGAI-JACOBSON	Rt. 9, Box 246	Beaver	25813
JINI MILLER	103 Ellen Lane	Morgantown	26505
<u>North Carolina:</u>			
GERRY ANGERMAN	924-D Lakecrest Ave.	High Point	27260
<u>Georgia:</u>			
ESTHER E. WYNNE	1837 Wrightsboro Rd. #4	Augusta	30904
<u>Kentucky:</u>			
NATALIE C. GRAY	Rt.4, Slaters Landing	Harrodsburg	40330
<u>Ohio:</u>			
JUDITH A. CARR	P.O. Box 5874	Pleasantville	43148
KIRSTE L. CARLSON	2062 East 115 St.	Cleveland	44106
BRIGID KELLY	9040 Spooky Ridge Lane	Cincinnati	45242
<u>Michigan:</u>			
JACQUELYN CAMPBELL	1044 Western	Ann Arbor	48103
<u>Iowa:</u>			
MARY HETTINGER	24008 Jennings	Sioux City	51104
<u>Wisconsin:</u>			
DOLORES DAWN	1115 Millwood Ave.	Waukesha	53186
<u>Minnesota</u>			
SHARON McDONALD	4403 Cedar Ave. South	Minneapolis	55407
SYLVIA MERTENS	St. Clouds AVTI 1540 Northway Dr.	St. Cloud	56301
<u>Illinois:</u>			
HELEN M. RAMIREZ	5615 N. Kimball	Chicago	60659
<u>Missouri:</u>			
D. ANN CHASE	9021-D Eager Rd.	St. Louis	63144
<u>Kansas:</u>			
LOIS A. MOUSHEY	612 Tenny St.	Kansas City	66101
JUDY SCHROCK	Rt. 4, Box 24	Manhattan	66502
<u>Nebraska:</u>			
LINDY WALKOWIAK	310 No. 48th St.	Omaha	68132
<u>Louisiana:</u>			
P.K. SCHEERLE	3012 19th St.	Metairie	70002
<u>Texas:</u>			
SUSAN GIBSON	1110 W. Saner Ave.	Dallas	75224
JOYCE DAINS	3626 Elmridge	Houston	77025
<u>Utah:</u>			
CAROL A. ASHTON	3685 Palisade Dr.	Salt Lake City	84109
<u>California:</u>			
MEG K. McCARTY	3739 Gaviota Ave.	Long Beach	90807
BARBARA J. LIMANDRI	557 59th Street	Oakland	94609
<u>Washington:</u>			
JOAN CARR LAPORTE	364 Catherine St. Spruces #2	Walla Walla	99362

CLASSIFIED

JOB ANNOUNCEMENT: Clinical Services Coordinator. This position is part of Women's Health Services leadership team. It combines direct patient care with administration of the clinical programs.

Responsibilities: assessment and management of women seeking routine gynecology care, family planning and first-trimester abortions; plans, coordinates and evaluates all clinical services; interviews and hires, in conjunction with the Assistant Director, all Clinical Staff; trains, supervises, and schedules all Clinical Staff; staffs Medical Standards Committee of the Board; additional administrative and program responsibilities as needed.

Qualifications: 2-3 years experience as a Nurse Practitioner, Physician Assistant or Certified Nurse Midwife; Professional Certification; experience in 1st and 2nd trimester abortion preferred; experience in the treatment of PMS preferred; CPR Certified; ability to incorporate a feminist vision of health care into the work place; ability to work with women of different racial, economic and cultural backgrounds.

Hours/Compensation: This is a full-time salaried position plus benefits. Salary negotiable. Schedule includes one evening a week and a minimum of two Saturdays a month plus on call (phone availability only) for two weeks every six weeks.

Please send resume with cover letter to: Assistant Director, Women's Health Services, 314 Prospect Street, New Haven, CT 06511. Or call 203/789-1272 **WOMEN OF COLOR ENCOURAGED TO APPLY**

JOB ANNOUNCEMENT: Nursing Graduate Faculty position/Women's Health Practitioner Program for Fall 1985. Potential for mid-wifery program. Experience as practitioner, educator and researcher desired. Doctoral degree preferred. Salary and rank based on qualifications. Send vita to Dr. Bonnie Bullough, Dean, State University of New York at Buffalo, School of Nursing, 1010 Stockton Kimball Tower, Buffalo, NY 14214. An Affirmative Action Equal Opportunity Employer.

Kalliope, a journal of women's art devotes itself to women in the arts by publishing their works and sharing their ideas and opinions. It is published three times a year by the Kalliope Writers Collective, Kalliope, 3939 Roosevelt Blvd., Jacksonville, FL 32205 Sample copies, \$3.50; 1 year subscriptions, \$9.

SAGE: A Scholarly Journal on Black Women is published twice a year. The purpose of this journal is threefold: to provide an interdisciplinary forum for critical discussion of issues relating to Black women, to promote feminist scholarship, and to disseminate new knowledge about Black women to a broad audience. Subscriptions are on a yearly basis: \$15 for individuals and \$25 for institutions. Please add an additional \$6 for subscriptions outside of the U.S. P.O. Box 42741, Atlanta, GA 30311-9741.

TELEWOMAN, Inc. is a non-profit educational organization whose primary service to lesbians is as networking resource for writers, artists, and educators. All labor, including the production of the newsletter is donated. Your financial donations to TELEWOMAN, Inc. are tax-deductible. Subscriptions are \$20 per year and include one free ad space. Sample or single issues are \$2. TELEWOMAN may be ordered for six months at \$10. Low-income women may request a full year's subscription for half-price. P.O. Box 2306, Pleasant Hill, CA 94523.

WOMAN OF POWER: A Magazine of Feminism, Spirituality, and Politics, an inspiring new international quarterly publication. Upcoming themes: "Woman As Warrior", "Women of Color: A Celebration of Power", "Healing", "International Feminism", "ReVisioning The Dark", and "Nature". Subscriptions \$18, \$13 low-income; \$22 Canada and all other countries. Single issue \$5 plus \$1 postage. P.O. Box 827, Cambridge, MA 02238-6204.

T H R U M S

(Any loose end, fringe, or tuft of thread; the fringe of warp threads left on a loom after the cloth has been cut off).

This Newsjournal was produced by:

The Buffalo Web. The women who were responsible for production of this issue were Charlene Eldridge Wheeler, and Peggy Chinn.

Appreciation to:

- Women who provided material for this issue.
- Jackie Campbell for the information and planning for the gathering.
- Barb Limandri and the San Francisco Web who provided the By-laws for this issue of the Newsjournal, and other information on incorporation in the March issue of the Action Network.
- The women of EMMA who assist with planning and fulfilling the book orders.
- Frigid, the technological wonder, without which all of this would be infinitely more difficult, if not impossible.

Illustrations:

Unless otherwise specified, the illustrations are from the following Dover publications: Women: A Pictorial Archive from Nineteenth-Century Sources, New York, Dover Publications, 1978; Treasury of Flower Designs (1981 by Susan Gaber); Banners, Ribbons and Scrolls (1983 ed. by Carol Belanger Grafton); Treasury of Art Nouveau Design and Ornament (1980 by Carol Belanger Grafton); and Art Nouveau (1969 by E.V. Gillon).

The photograph of Margaret Snell was provided by Anne Montes of the Buffalo Web, March, 1985.

Quotes:

Starhawk's quote on the front page of this Newsjournal is from Dreaming the Dark: Magic, Sex and Politics, Boston, Beacon Press, 1982, p. 92. This quote is the first paragraph of Chapter 6 titled Building Community: Processes for Groups. This book appears on the EMMA order form in this issue of the Newsjournal, and is available in many women's bookstores.

BUDGET REPORT: January 1 - April 1, 1985

ASSETS:		EXPENSES:	
Draft Account (available for operations)		Supplies	-0-
Balance forwarded	\$3866.23	Postage:	
Income:		Newsjournal:	162.90
Membership (gross)	\$1310.00	Membership:	284.00
Less 13% research fund	-170.30	Administration:	5.02
Net membership	1139.70	Total postage:	451.92
Newsjournal reprints	12.00	Printing/Xerox:	
Bank dividend	51.72	Newsjournal:	518.90
Total income	1203.42	Membership:	21.30
Total usable assets:	5069.65	Administration:	5.50
		Total printing:	545.70
		Equipment (word processing)	
Research fund (not available for operations)		Newsjournal:	479.52
Balance forwarded:	\$1451.99	Membership:	277.98
13% new contributions:	170.30		757.50
Bank dividend:	23.68	Personnel:	-0-
Total:	1645.97	Travel:	-0-
		Phone:	
		Administration:	64.20
		Returned check charges:	15.00
		Total expenses:	-1844.32
		CLOSING BALANCE:	\$3225.33



IT MAY BE TIME TO RENEW . . .

Check your mailing label - if your renewal date is circled in red, it is time for you to renew! Send your contribution, with your name and complete address to CASSANDRA, P.O. Box 341, Williamsville, NY 14221. Be sure to let us know if your address has changed. If you want to have your telephone number available for your contact woman, please include your phone number. The contribution for Websters is \$35 to \$50, (students, retired, unemployed and differently-abled nurses \$15); Friends, \$25; Institutions, \$35.

